

Warning



- Ask a qualified installer or contractor to install this product. Do not try to install the product by yourself. Improper installation can result in water or refrigerant leakage, electrical shock, fire or explosion.
- Use only those parts and accessories supplied or specified by Daikin. Ask a qualified installer or contractor to install those parts and accessories. Use of unauthorised parts and accessories or improper installation of parts and accessories can result in water or refrigerant leakage, electrical shock, fire or explosion.
- Read the user's manual carefully before using this product. The user's manual provides important safety instructions and warnings. Be sure to follow these instructions and warnings.

If you have any enquiries, please contact your local importer, distributor and/or retailer.

**Cautions on product corrosion**

1. Air conditioners should not be installed in areas where corrosive gases, such as acid gas or alkaline gas, are produced.
2. If the outdoor unit is to be installed close to the sea shore, direct exposure to the sea breeze should be avoided. If you need to install the outdoor unit close to the sea shore, contact your local distributor.

Đại lý phân phối:



**DAIKIN INDUSTRIES, LTD.**

● **Head Office**  
Umeda Center Bldg., 2-4-12, Nakazaki-Nishi, Kita-ku, Osaka, 530-8323 Japan

● **CÔNG TY CỔ PHẦN VIỆT KIM**  
● **VĂN PHÒNG CHÍNH**  
Tầng 14-15, tòa nhà Nam Á, 201-203 Cách Mạng Tháng 8, P.4, Q.3, TP.HCM  
Tel: (08) 62 504 888 Fax: (08) 62 504 999  
● **CHI NHÁNH HÀ NỘI**  
Tầng 12, tòa nhà Ocean Park Tower, 1 Đào Duy Anh, Quận Đống Đa, Hà Nội  
Tel: (04) 35 657 677 Fax: (04) 35 657 688  
● **CHI NHÁNH ĐÀ NẴNG**  
Tầng 12, Lô A2.1, Đường 30/4, P. Hòa Cường Bắc, Q. Hải Châu, TP. Đà Nẵng  
Tel: (0511) 362 4250 Fax: (0511) 362 4251  
[www.daikin.com.vn](http://www.daikin.com.vn)



**AIR CONDITIONING SYSTEM  
COOLING ONLY [50Hz]**

**R-410A**

# New wide lineup of SkyAir series.

## Product Lineup



Series		09	13	18	21	26	30	36	42	48
Btu/h		9,200	13,000	18,000/17,700*1	21,000	26,000	30,000	36,000/35,000*2	42,600/42,000*2,3	48,000
kW		2.7	3.8	5.3/5.2*1	6.2	7.6	8.8	10.6/10.4*2	12.5/12.3*2,3	14.1

Pair	<b>CEILING MOUNTED CASSETTE TYPE</b> 〈Round Flow〉												
			Indoor unit	FCNQ13MV1	FCNQ18MV1	FCNQ21MV1	FCNQ26MV1	FCNQ30MV1	FCNQ36MV1	FCNQ42MV1	FCNQ48MV1		
	Outdoor unit	RNQ13MV1	RNQ18MV1	RNQ21MV1	RNQ26MV1	RNQ26MY1	RNQ30MV1	RNQ30MY1	RNQ36MV1	RNQ36MY1	RNQ42MV1	RNQ48MY1	
	<b>CEILING SUSPENDED TYPE</b>												
		Indoor unit	FHNQ13MV1	FHNQ18MV1	FHNQ21MV1	FHNQ26MV1	FHNQ30MV1	FHNQ36MV1	FHNQ42MV1	FHNQ48MV1			
	Outdoor unit	RNQ13MV1	RNQ18MV1	RNQ21MV1	RNQ26MV1	RNQ26MY1	RNQ30MV1	RNQ30MY1	RNQ36MV1	RNQ36MY1	RNQ42MV1	RNQ48MY1	
	<b>DUCT CONNECTION</b>	<b>LOW STATIC PRESSURE TYPE</b>											
			Indoor unit	FDBNQ09MV1	FDBNQ13MV1	FDBNQ18MV1	FDBNQ21MV1	FDBNQ26MV1					
	Outdoor unit	RNQ09MV1	RNQ13MV1	RNQ18MV1	RNQ21MV1	RNQ26MV1	RNQ26MY1						
	<b>MIDDLE STATIC PRESSURE TYPE</b>												
Indoor unit		FDMNQ26MV1	FDMNQ30MV1	FDMNQ36MV1	FDMNQ42MV1	FDMNQ48MV1							
Outdoor unit	RNQ26MV1	RNQ26MY1	RNQ30MV1	RNQ30MY1	RNQ36MV1	RNQ36MY1	RNQ42MV1	RNQ48MY1					
<b>OUTDOOR UNIT</b>													
Outdoor unit	RNQ09MV1	RNQ13MV1	RNQ18MV1	RNQ21MV1	RNQ26MV1	RNQ26MY1	RNQ30MV1	RNQ30MY1	RNQ36MV1	RNQ36MY1	RNQ42MV1	RNQ48MY1	

Note : \*1Applicable to FDBNQ series. \*2Applicable to FHNQ series. \*3Applicable to FDMNQ series.



# Cassette air conditioner with 360° uniform airflow sets the standard



FCNQ13/18/21/26/30/36/42/48MV1

**ROUND FLOW**

Sound level  
**43/32** dB(A)  
High Low  
FCNQ36M (220V)

**Option**  
Accessory required for indoor unit.

**Wired LCD remote controller**  
**BRC1C61**  
Note: Remote controller cable not included. Cables must be procured locally.

**Navigation Remote Controller**  
(Wired Remote Controller)  
**BRC1E62**  
Note: Remote controller cable not included. Cables must be procured locally.

**Wireless LCD remote controller**  
A signal receiver must be added to the indoor unit.  
**BRC7F633F**  
Signal receiver unit (Installed type)  
Wireless remote controller and signal receiver unit are sold as a set.

## Features

Comfort		Remote controller		Cleanliness	Work & Servicing		Control features				Options	Others																		
Auto swing	Swing pattern selection	Switchable fan speed (2 step)	Programme "Dry"	High ceiling application	Two selectable temperature-sensors	Setpoint auto reset	Setpoint range set	Weekly schedule timer	Off timer (programmed)	On/Off timer	Anti-bacterial air filter	Drain pump mechanism	Pre-charged for up to 15 m	Pre-charged for up to 10 m	Long-life filter	Filter sign	Ceiling soiling prevention	Auto-restart	Control by 2 remote controllers	Group control by 1 remote controller	External command control	Central remote control	Interlock control	DJII-NET communication standard	High-efficiency filter	Ultra long-life filter	Fresh air intake kit	Anti-corrosion treated heat exchangers		
•	•	•	•	•	•	*1	*2	*2	*2	*3	•	•	*4	*5	•	•	•	•	•	•	•	•	•	•	•	•	•	•	•	*6

\*1 Applicable when wired remote controller is used  
\*2 Applicable when BRC1E62 is used  
\*3 Applicable when BRC1C61 is used

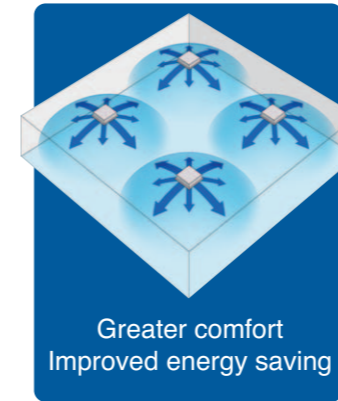
\*\*Applicable to RNQ30-48M outdoor units  
\*4 Applicable to RNQ13-26M outdoor units  
\*5 For the outdoor units

- Avoids uneven temperature and discomfort caused by drafts.

## Comfort enhanced by Round Flow!

- 360° airflow
- Air movement is gentle with Round Flow

With uniform temperature distribution



Airflow distribution  
Creates uniform comfort throughout the space

Greater comfort  
Improved energy saving

Enhanced Comfort



360° airflow can maintain comfort even if air discharge speed is lower.

If you raise the set temperature by 1 to 1.5°C, and velocity is decreased by 25%, you still obtain the same feeling temperature and comfort.

## Adapts easily to the installation space.

- Because air flows out from corner outlets, comfort spreads more widely.

**Typical flow patterns** There are a total of 23 flow patterns.

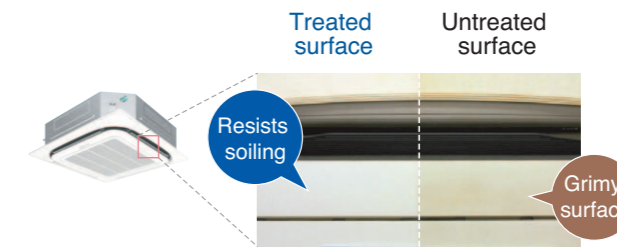
All-round flow	3-way flow	L-shaped 2-way flow	Opposite 2-way flow
(E.g., installed in middle of ceiling) 4-way flow also possible.	(E.g., installed near a wall)	(E.g., installed in a corner)	(E.g., installed in a long room)

Note: Whatever the discharge direction, the same type of panel is used. If installing for other than all-round flow, an air discharge outlet sealing material (option) must be used to close each unused outlet.  
Operation sound increases when using 2-way or 3-way flow.

- Grime prevention and bactericidal coating: Make cleaning easier.

External panels are treated with a coating that repels dirt.

- To prevent dirt sticking to the external panels, they have been coated with a surface treatment.



Condition after exposure to the smoke of 600 cigarettes in 1 m<sup>3</sup> enclosed space.

- Non-flocking flaps

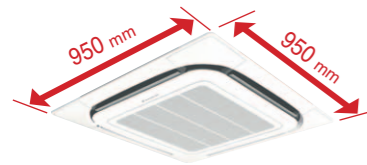
Condensation does not easily form on and dirt does not cling to non-flocking flaps. It is easy to clean.

- Filter has anti-mould and bactericidal treatment

Prevents mould and microorganisms growing out of the dust and moisture that adheres to the filters.

## Fine square panels

- Panel size is same for all models, FCNQ13-48M. It is easy to maintain a neat appearance when multiple units are installed.



Same for all models

## Compact body and quiet operation

Indoor unit	High	Low
13/18M	31	28
21/26M	35	28
30/36M	43	32
42M	44	34
48M	44	36

Note: Anechoic chamber conversion value, measured according to JIS parameters and criteria. During operation these values are somewhat higher owing to ambient conditions.

## Optimal comfort and convenience assured by 2 air discharge modes

Note: Air direction is set to the standard position when the unit is shipped from the factory. The position can be changed from the remote controller.

Air direction	Standard setting	Setting to prevent soiling of ceiling*
Desired situation	Standard position to prevent draft.	Recommended for shops with light coloured ceilings that must be kept spotless.
Auto-swing	Auto-swing between 15° and 60°	Auto-swing between 25° and 60°
5-levels air direction setting	Settable to 5 different levels between 15° and 60°	Settable to 5 different levels between 25° and 60°
Auto air direction control	The air direction is set automatically to the memorised position of the previous air direction.	

\*Closing of the corner discharge outlets is recommended.

## Suitable for high ceilings

Even in spaces with high ceilings, a comfortable airflow is carried down to the floor level.

### Criteria for ceiling height and number of air discharge outlets

(Ceiling height is reference value)

Ceiling height	Standard	Number of air discharge outlets used							
		13-26M				30-48M			
		All round flow	4-way flow	3-way flow	2-way flow	All round flow	4-way flow	3-way flow	2-way flow
Standard	2.7 m	3.1 m	3.0 m	3.5 m	3.2 m	3.4 m	3.6 m	4.2 m	
High ceiling ①	3.0 m	3.4 m	3.3 m	3.8 m	3.6 m	3.9 m	4.0 m	4.2 m	
High ceiling ②	3.5 m	4.0 m	3.5 m	—	4.2 m	4.5 m	4.2 m	—	

Note: Factory settings are for standard ceiling height and all-round flow. High ceiling settings (1) and (2) are set with the remote controller by field setting.

## Two selectable temperature-sensors

Both indoor unit and wired remote controller (option) contain temperature-sensors. Temperature sensing can be set at the unit or, to further improve comfort level, closer to the target area at the wired remote control. This feature must be set during commissioning by the technicians.

\*Temperature-sensor on indoor unit must be used when the air conditioner is controlled from another room.  
\*\*Wireless remote controller does not have a temperature-sensor.

## Switchable fan speed: High/Low

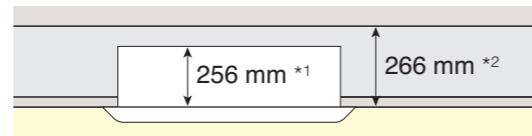
High setting provides maximum reach while low setting minimises drafts.

## On/Off timer

Operation starts when the preset time of the ON timer elapses and stops when the preset time of the OFF timer elapses.

## Quick and easy to install

- Just 256 mm high. Installable in tight ceiling spaces (13-26M)



\*1 298 mm high with 30-48M  
\*2 308 mm high with 30-48M

## Easy height adjustment

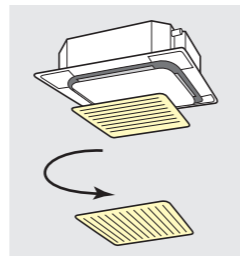
Each corner of the unit has an Adjuster Pocket that lets you easily adjust the unit's suspended height.

Note: If the wireless remote control option is installed, a light receptor unit is housed in one of the adjuster pockets.

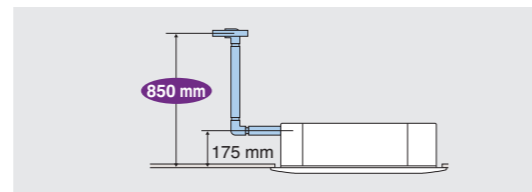
- All models can be installed without using lifter because of the light weight.

## Installable in any direction

Since the orientation of the intake grill can be adjusted after installing, the direction of the intake grill lines can be unified when multiple units are installed.



- Drain pump is equipped as standard accessory with 850 mm lift.



## Transparent drain socket

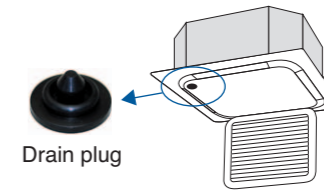
Because the drain socket is transparent, after the drain piping has been installed, it is easy to check if the drain come out through the socket.



- Connection to a centralised control system is available without option

## Easier to maintain

- The condition of the drain pan and drain water can be checked by removing the drain plug and intake grille.



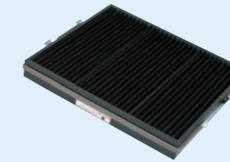
Just open the intake grille!

- With Ultra long-life filters (option), maintenance is not required in normal shops or offices for up to four years.

## Options required for specific operating environments

### Ultra long-life filter

Even in smoky environments where the air conditioning is on most of the time, the ultra long-life filter only has to be changed once a year.



### Smoky atmosphere: annual filter change

\*For dust concentration of 0.3 mg/m<sup>3</sup> (Requires separately sold Air Cleaner.)  
1 year (Approx. 5,000 hr) ≈ 15 hr/day x 28 day/month x 12 month/year

### Ordinary store or office: filter change every 4 years

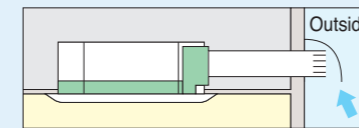
\*For dust concentration of 0.15 mg/m<sup>3</sup>  
4 years (Approx. 10,000 hr) ≈ 8 hr/day x 25 day/month x 4 years

### High-efficiency filter

Available in two types: 65% and 90% colorimetry.

### Fresh air intake kit

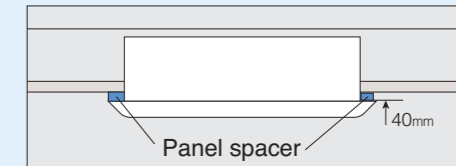
Using this kit, a duct can be fitted to increase the intake of outdoor air.



Note: \*Connecting ducts, insect nets, fire dampers, air filters, and other parts should, as required, be procured locally.  
\*\*Outside Air fan interlocked with air conditioning unit is necessary. Optional PCB(KRP1C63)is required for interlocking.  
\*\*\*It is recommended that the volume of outdoor air introduced through the kit is limited to 10% of the maximum airflow rate of the indoor unit. Introducing higher quantities will increase the operating sound and may also influence temperature sensing.

### Panel spacer

Use when only minimal space is available between drop ceilings and ceiling slabs.



Note: Some ceiling constructions may hinder installation. Contact your Daikin Dealer before installing your unit.

### Sealing material of air discharge outlet

Sealing material block air discharge openings not used in 2-way or 3-way blow.

### Branch duct (direct-connection round duct)

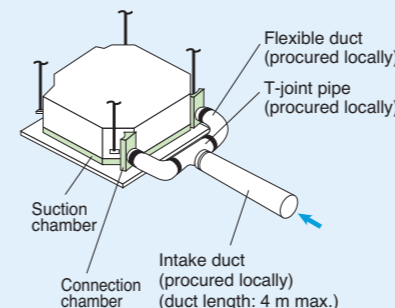
A round duct can be attached without the need for a chamber. A flanged port for direct connection of a round duct is provided. An existing branch duct chamber can also be fitted (square slit hole).

## The units can be installed in the following different ways.

### Chamber type

(without T-joint pipe and fan)

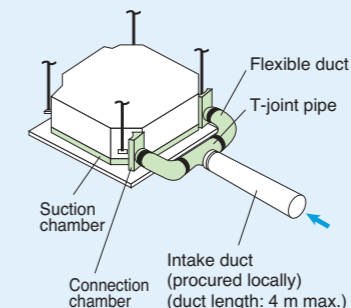
KDDP55B160



### Chamber type

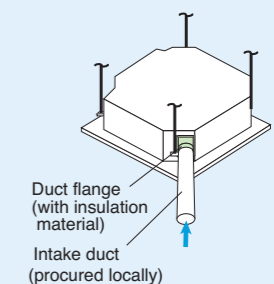
(with T-joint pipe and without fan)

KDDP55B160K



### Direct installation type

KDDP55X160



Note: Use of options will increase operating sound.

# Upgrade to a quiet and compact system.



**Option**

Accessory required for indoor unit.

**Wired LCD remote controller**



**BRC1NU61**

Note: Remote controller cable not included. Cables must be procured locally.

**Wireless LCD remote controller**

A signal receiver must be added to the indoor unit.



**BRC7NU66**



Signal receiver unit (Installed type)  
Wireless remote controller and signal receiver unit are sold as a set.

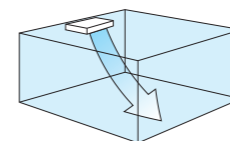
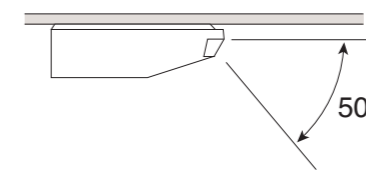
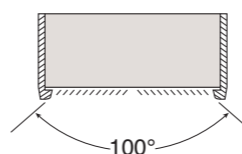
**Features**

Comfort				Remote controller	Cleanliness	Work & Servicing			Control features	Others
Auto swing	Switchable fan speed (2 step)	Programme "Dry"	High ceiling application	On/Off timer	Anti-bacterial air filter	Pre-charged for up to 15 m	Pre-charged for up to 10 m	Long-life filter	Auto-restart	Anti corrosion treated heat exchangers
•	•	•	*1	•	•	*2	*3	•	•	*4

\*1 Installable on max. 3.5 m high ceiling  
\*2 Applicable to RNQ30-48M outdoor units  
\*3 Applicable to RNQ13-26M outdoor units  
\*4 For the outdoor units

## Diffuses comfortable air throughout the room

- Auto-swing (up&down) brings comfort to the room.
- Wide air discharge openings produce a spreading 100° airflow
- Air is blown up to 50° in the downward direction.



- Installable on ceilings 3.5 m high
- Switchable fan speed: High/Low
- Programme "Dry"  
Dehumidification is microprocessor controlled to prevent abrupt and uncomfortable changes in air temperature.

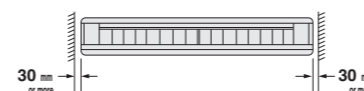
## Installation flexibility for freedom of design

- Uniform height and depth. Compact design for small-capacity models to meet tighter dimensional constraints.

Indoor unit	13M	18/21M	26/30M	36/42/48M
Height	195 (mm)			
Width	960	1,160	1,400	1,590
Depth	680			

- Flexible installation

The unit fits more snugly into tight spaces.



\*Water used in the test-run can now be drained from the air discharge opening rather than from the side as was formerly the case.

- All wiring and internal servicing can be done from under the unit
- Pipes more easily rigged  
Plastic cover is used to conceal piping work holes. When piping work the cover is easily taken off, and after piping work easily attached again to conceal the holes.

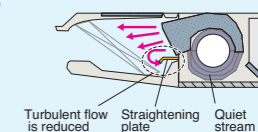
## Quiet operation

- Sound operation has been reduced on the exposed ceiling suspended type unit.

Indoor unit	(220V) dB(A)	
	High	Low
13M	43	39
18/21M	44	40
26/30M	45	40
36/42M	48	42
48M	49	43

Note: Anechoic chamber conversion value, measured according to JIS parameters and criteria. During operation these values are somewhat higher owing to ambient conditions.

**Uses quiet stream fan and other quiet technologies.**



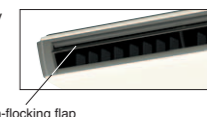
## Easier to maintain

- Long-life filter lasts about 1 year\*

\* For dust concentration of 0.15 mg/m<sup>3</sup>  
Two time settings (2500 hrs and 1250 hrs) are available to match the installation environment. Maintenance time warning is displayed on the remote controller (filter sign).

- Non-flocking flap

Condensation does not easily form on and dirt does not cling to non-flocking flap. It is easy to clean.



- Easy-clean, flat surfaces

It is easy to wipe dirt off the flat side and lower surfaces of the unit.

- For all maintenance tasks, access is from bottom surface.

## Oil resistant grille

- Oil-resistant plastic is used for the air suction grille. This satisfies durability in restaurants and other similar environments.

Note: Intended for use in salons, dining rooms, and ordinary sales floors, this specification is not suitable for kitchens or other harsh environments.

## DUCT CONNECTION LOW STATIC PRESSURE TYPE

- Ideal for quiet, beautiful living spaces
- Suitable for condominiums and apartments, houses and hotels



FDBNQ09/13/18/21/26MV1

Sound level  
43/40 dB(A)  
High Low  
FDBNQ26M  
(220V)

Option Accessory required for indoor unit

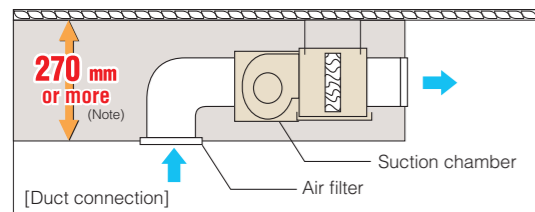
Wired LCD remote controller  
BRC1C61

Navigation Remote Controller  
(Wired Remote Controller)  
BRC1E62

Wireless LCD remote controller  
A signal receiver must be added to the indoor unit.  
BRC4C64  
Signal receiver unit (Separate type)  
Wireless remote controller and signal receiver unit are sold as a set.

### Compact

- Small, lightweight, and easy-to-install indoor unit.



Note : 270 mm is the minimum size.  
Extra height is necessary for drain piping slope and insulation.

\* To prevent increased operation sound, avoid installing the air suction grille directly below the suction chamber.

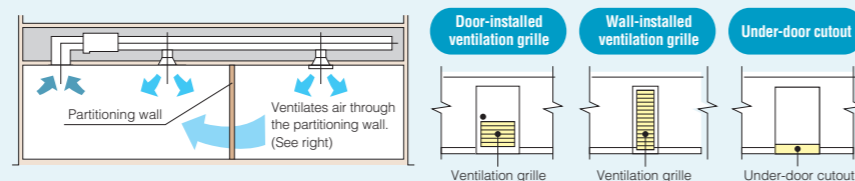
### Quiet operation

Indoor unit	(220V) dB(A)	
	High	Low
09/13/18M	41	38
21/26M	43	40

### Simultaneous air conditioning of two rooms and ventilation grille (ventilation opening)

(This feature also applies to duct connection middle static pressure type.)

When air conditioning two rooms simultaneously, the air discharged into each room must be circulated back to the air conditioner. To achieve this, a ventilation duct should be installed for each room or one of the indicated ventilation grilles should be installed on the partitioning wall or under the door between the rooms.



Note: The under-door cutout method should be used only when there is a small volume of airflow.

### Features

Comfort			Remote controller					Work & Servicing	Control features			Others
Switchable fan speed (2 step)	Programme "Dry"	Two selectable temperature-sensors	Setpoint auto reset	Setpoint range set	Weekly schedule timer	Off timer (programmed)	On/Off timer	Pre-charged for up to 10 m	Auto-restart	Control by 2 remote controllers	Group control by 1 remote controller	Anti corrosion treated heat exchangers
•	•	*1	*2	*2	*2	*2	*3	*4	•	•	•	*4

\*1Applicable when wired remote controller is used  
\*2Applicable when BRC1E62 is used

\*3Applicable when BRC1C61 is used  
\*4For the outdoor units

## DUCT CONNECTION MIDDLE STATIC PRESSURE TYPE

- Unit can be mounted in the ceiling and air can be delivered freely by duct.



FDMNQ26/30/36/42/48MV1

Sound level  
45/37 dB(A)  
High Low  
FDMNQ36M  
(220V)

Option Accessory required for indoor unit

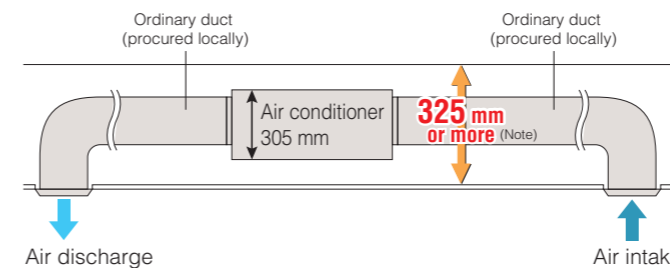
Wired LCD remote controller  
BRC1C61

Navigation Remote Controller  
(Wired Remote Controller)  
BRC1E62

Wireless LCD remote controller  
A signal receiver must be added to the indoor unit.  
BRC4C64  
Signal receiver unit (Separate type)  
Wireless remote controller and signal receiver unit are sold as a set.

### Freedom of layout

- The duct system allows the efficient location of discharge outlets in accordance with the room layout
- Duct connection is simpler with standard rear intake chambers



Note : 325 mm is the minimum size.  
Extra height is necessary for drain piping slope and insulation.

### Quiet operation

Indoor unit	(220V) dB(A)	
	High	Low
26M	42	38
30M	44	36
36M	45	37
42/48M	46	37

- Switchable fan speed: High/Low
- Drain pipe connection can be done inside the unit. Refrigerant and drain pipe outlets are at the same opening.

### Features

Comfort			Remote controller					Work & Servicing	Control features			Others	
Switchable fan speed (2 step)	Programme "Dry"	Two selectable temperature-sensors	Setpoint auto reset	Setpoint range set	Weekly schedule timer	Off timer (programmed)	On/Off timer	Pre-charged for up to 15 m	Pre-charged for up to 10 m	Auto-restart	Control by 2 remote controllers	Group control by 1 remote controller	Anti corrosion treated heat exchangers
•	•	*1	*2	*2	*2	*2	*3	*4	*5	•	•	•	*6

\*1Applicable when wired remote controller is used  
\*2Applicable when BRC1E62 is used  
\*3Applicable when BRC1C61 is used

\*4Applicable to RNQ30-48M outdoor units  
\*5Applicable to RNQ26M outdoor units  
\*6For the outdoor units



RNQ09MV1  
RNQ13MV1

RNQ18MV1  
RNQ21MV1

RNQ26MV1  
RNQ26MY1

RNQ30MV1  
RNQ30MY1

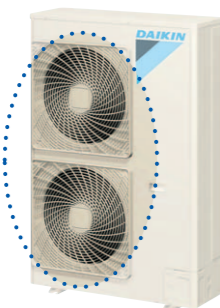
RNQ36MV1  
RNQ36MY1  
RNQ42MY1  
RNQ48MY1

## Quiet Operation

### Fitted with Super Aero Grille

(Applies to RNQ30-48M)

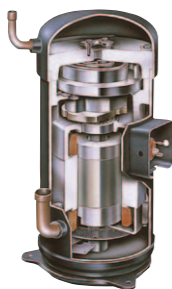
To suppress turbulence and achieve quiet operation, the curved ribs of the grille are optimised to meet the outflow of air.



### Equipped with scroll compressor for quiet operation

(Applies to RNQ42-48M)

Smooth running, minimal vibration, low operating sound.



### Operation sound

(In case of RNQ09-21M:220-240 V, RNQ26-36M:220 V/380 V, 240 V/415 V, RNQ42-48M:380 V, 415 V) dB(A)

Outdoor unit	Sound level
RNQ09MV1	48
RNQ13MV1	49
RNQ18MV1	51
RNQ21MV1	52
RNQ26MV1/RNQ26MY1	54
RNQ30MV1/RNQ30MY1	55
RNQ36MV1/RNQ36MY1	54
RNQ42MY1	56
RNQ48MY1	58

## Installation and maintenance

### Pre charged for up to 15 metres (Applies to RNQ30-48M)

If refrigerant piping length does not exceed 10m (RNQ09-26M), 15m (RNQ30-48M), there is no need for on-site gas charging.

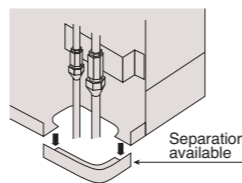
#### Allowed refrigerant piping length and level difference

	RNQ09/13M	RNQ18/21M	RNQ26M	RNQ30-48M
Pre charged <sup>1</sup>	10 m			
Max. length	30 m		30 m (Equivalent length 50m)	50 m (Equivalent length 70m)
Max. level difference	10 m	15 m	20 m	30 m

Note:  
<sup>1</sup>Additional refrigerant charging is required if the refrigerant pipe is longer than the length.

### 4-direction piping offers greater layout freedom (Applies to RNQ30-48M)

The outer panel for the piping connection part of the front, right side and backside can be removed and is easier for post-installation piping work.



## Durability

As the bottom frame is subject to corrosion, corrosion-proof galvarium steel plate is adopted to enhance the durability.

### Heat exchange fins provided with anti-corrosion treatment (Applies to RNQ09-26, 36-48M)

To achieve increased durability by improved resistance to salt corrosion and atmospheric pollution, Anti corrosion treated heat exchangers (with special acryl pretreatment) are used for the heat exchanger of the outdoor unit.

#### Construction



## Simple system provides a diverse assortment of control modes.

	Control pattern	Applicable model	Wired remote controller	Wireless remote controller
<b>Control by 1 remote controller</b>	(Basic system)	FCNQ	 ● Non-polar, double-core (max. wiring length 500 m)	 ● Signal receiver unit installed on indoor unit
<b>Control by 2 remote controllers</b>	For control from 2 locations such as in room and control room, exits, etc.	FDBNQ FDMNQ	 ● Connects 2 wired remote controllers (See note 1)	 ● Control by 1 wireless remote controller and 1 wired remote controller (See note 2, 3) ● Signal receiver unit installed on indoor unit
<b>Group control</b>	For simultaneous control of up to 16 indoor units.	FDMNQ	 ● Automatic address setting function	 ● Automatic address setting function ● Signal receiver unit installed on 1 indoor unit
<b>Control by external command</b>	Operation and surveillance is carried out using the contact signal from the operation control box in the building surveillance (security) room.		 ● Optional wiring adaptor for electrical appendices is necessary	 ● Optional wiring adaptor for electrical appendices is necessary
<b>Centralised remote control</b>	Centralised control of up to 64 indoor groups from remote location up to 1 kilometer away.	FCNQ only	 Central remote controller (option)	 Central remote controller (option)
<b>Interlock control with Heat Reclaim Ventilator</b>	Link by remote controller group control.		 ● Can be operated simultaneously or independently by remote controller (set by ventilation mode)	 ● Can be operated simultaneously by remote controller (set by ventilation mode)
	Zone link control by centralised control.		 Central remote controller (option) Heat Reclaim Ventilator ● Heat Reclaim Ventilator for indoor units within a zone are operated by interlocking Can also be operated independently by remote controller.	 Central remote controller (option) Heat Reclaim Ventilator ● Heat Reclaim Ventilator for indoor units within a zone are operated by interlocking

Note: <sup>1</sup>BRC1E62 can connect to BRC1E62 only.  
<sup>2</sup>It is not possible to use two wireless remote controllers.  
<sup>3</sup>BRC1E62 cannot connect to wireless remote controller.

## Easily adaptable to large-scale, high-function, centralised remote control system.

FCNQ series only



### Central remote controller

DCS302CA61 (Option)



Centralised control, with setting as simple as it is with a standard remote controller, of up to 64 groups (1,024 indoor units) is possible.

### Unified on/off controller

DCS301BA61 (Option)



Centralised control of on/off by group or all at once for up to 256 indoor units.

### Schedule timer

DST301BA61 (Option)



Unified control of weekly schedule for up to 1,024 indoor units. Schedule timer sets on/off time in 1 minute units to be executed twice a day for a week at a time.

### Intelligent Controller

DCS601C51 (Option)



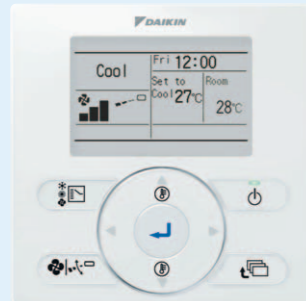
With its high functionality, the full colour "all-in-one" graphic controller facilitates management of SkyAir System in a variety of ways.

# Easy-to-read LCD remote controller allows various system control configurations and can control multiple indoor units.

Remote controller options are shown on the page introducing each indoor unit model.

## Navigation Remote Controller (Wired Remote Controller BRC1E62)

**NEW**

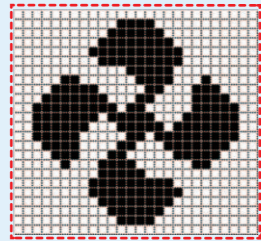


This simple, modern designed remote controller with fresh white colour matches your interior design. Operation is much easier and smoother, just follow the indications on the navigation remote controller.

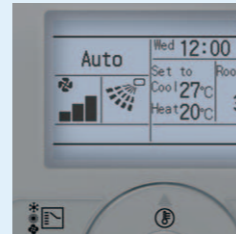
## Clear Display

### Dot matrix display

A combination of fine dots enables various icons. Large text display is easy to see.



### Backlight display

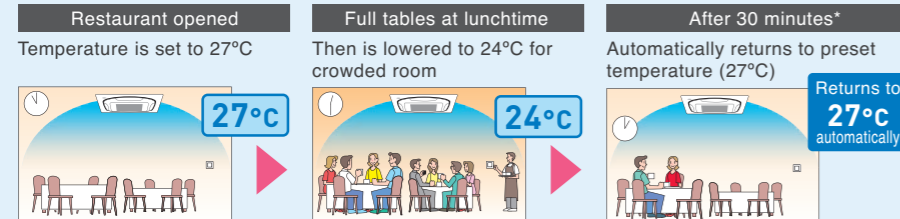


## Energy saving

### **NEW** Setpoint auto reset

- Even if the set temperature is changed, it returns to the preset temperature after a preset period of time.
- Period selectable from 30min/60min/90min/120min.

#### Restaurant sample

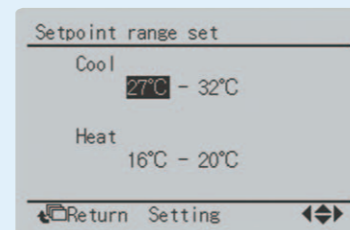


### Off timer (programmed)

- Sets and saves setting for an increment of time that automatically turns off air conditioner after a preset period of time for each time operation starts.
- Period can be preset from 30 to 180 minutes in 10-minute increments.

### **NEW** Setpoint range set

- Saves energy by limiting the min. and max. set temperature.
- Avoids excessive heating or cooling.
- This function is convenient when the remote controller is installed at a place where any number of people may operate it.



## Convenience

### Weekly schedule

- 5 actions per day can be scheduled for each day of the week.
- The holiday function will disable schedule timer for the days that have been set as holiday.

**NEW** - 3 independent schedules can be set. (e.g. summer, winter, mid-season)

Schedule nr 1				
	Time	Act	Cool	Heat
Mon	8:30	ON	25°C	—
	10:00	OFF	—°C	—°C
	13:00	ON	25°C	—
	15:00	OFF	—°C	—°C

### Multilingual display

Display is available in 11 languages.

(English, German, French, Spanish, Italian, Portuguese, Greek, Dutch, Russian, Turkish, and Polish).

## Wired LCD remote controller

Easy to read because of large LCD screen.



- The rubber switch and the oil-resistant plastic casing are adopted for durability.
- Only 17 mm thick. Can be installed either recessed or exposed.

## Wired remote controller has built-in temperature-sensor

(Applies to wired remote controllers (BRC1C61/1E62))

- Enables temperature sensing closer to target area for improved comfort. (When using remote control from another room, temperature-sensor in indoor unit's air inlet must be selected.)

## Facilitates maintenance and repair

- All initial settings can be set from the remote controller. After interior construction is complete, ceiling mounted cassette type can be remotely set without having to use stepladder access for manual setting.

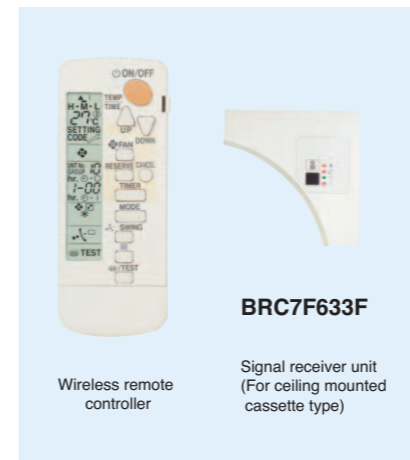
Setting contents: High ceiling use, air direction, filter type, address for centralised control (group control address is set automatically).

- Remote controller is equipped with model name and failure display functions. This facilitates service in the unlikely event of a malfunction. (Applies to wired remote controller (BRC1E62))

## Ceiling mounted cassette type shares common control with Heat Reclaim Ventilator and the other Daikin air-conditioning units, thus simplifying interlocking operations.

- Easily adaptable to large-scale, high-function, centralised remote control systems. Installing and connecting control wiring between SkyAir and other Daikin air-conditioning equipment is easy.

## LCD wireless remote controller



- The wireless remote controller is supplied in a set with a signal receiver.
- Signal receiver unit is contained inside decoration panel or indoor unit.
- Shape of signal receiver unit differs according to the indoor unit.

Note: The signal receiver unit shown in the photograph is for mounting inside the decoration panel of the ceiling mounted cassette type.

## Wireless remote controller for each indoor unit type

CEILING MOUNTED CASSETTE TYPE	BRC7F633F
CEILING SUSPENDED TYPE	BRC7NU66
DUCT CONNECTION LOW STATIC PRESSURE TYPE	BRC4C64
DUCT CONNECTION MIDDLE STATIC PRESSURE TYPE	BRC4C64

## LCD panel shows operating status in letters, numbers, and motion.

### Airflow / swing display

Displays auto-swing operating status and setting position of air discharge angle.

### Preset temperature / operation mode display

Displays preset room temperature and operating status (fan, dry, cool).

### Programming time display

Operation start and stop time can be set for individual timers up to 72 hours. The LCD also shows when it is time to clean the filter, when changeover is under centralised control, and ventilation/cleaning.

### Self-diagnosis function

Monitors operating status within the system covering 40 items, and displays a message to indicate as soon as a malfunction occurs.



# Abundance of functions that provide comfortable air-conditioning in stores and offices.

• Note: Some features only available on selected models. See model pages for full list of features applicable to each unit.

## Comfort

### Auto-swing

Delivers comfortable air-conditioning to all areas, near and far from the air-conditioner.

■ The air flow direction can be fixed at your desired angle by the remote controller.

### Swing pattern selection

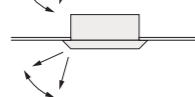
(standard, ceiling soiling prevention)

You can freely set 2 air discharge setting by remote controller.

(1) Standard setting



(2) Ceiling soiling prevention setting



### Switchable fan speed

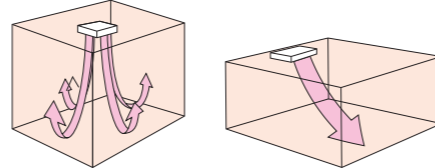
High setting provides maximum reach while low setting minimises drafts.

### Programme "Dry"

Dehumidification is microprocessor controlled to prevent abrupt and uncomfortable changes in air temperature. Useful for reducing uncomfortable humidity without uncomfortable cooling of the room.

### High-ceiling application

Delivers air-conditioning comfort all the way down to the floor in air-conditioning zones with high ceilings.

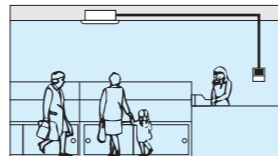


Note: When units are installed on high ceilings, depending on the model, various restrictions concerning maximum height, air discharge direction, and choice of options may apply.

### Two selectable temperature-sensors

Temperature-sensors are included in the indoor unit and optional wired remote controller. Temperature sensing closer to target area is possible to further increase the comfort level.

- Use the temperature-sensor in the indoor unit when controlling air conditioning from another room.



Note: Wireless remote controllers have no temperature-sensor.

## Remote Controller

### Setpoint auto reset

Even if the set temperature is changed, it returns to the preset temperature after a preset period of time.

### Setpoint range set

Saves energy by limiting the minimum and maximum set temperatures. Avoids excessive heating and cooling.

### Weekly schedule timer

Up to five operation ON/OFF settings can be programmed per day for each day of the week. Not only can the time be set for the operation ON setting, but also the temperature.

### Off timer (programmed)

Sets and saves setting for an increment of time that automatically turns off air conditioner after a preset period of time for each time operation starts.

### On/Off timer

Operation starts when the preset time of the ON timer elapses and stops when the preset time of the OFF timer elapses.

## Cleanliness

### Anti-bacterial air filter

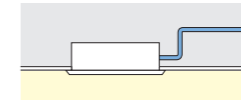
The Air filter has a anti-bacterial treatment to help prevent the growth of bacteria and mould on it.

• Note: Some features only available on selected models. See model pages for full list of features applicable to each unit.

## Work and Servicing

### Drain pump mechanism

Steeper gradient realises more efficient condensate drainage. High-lift is especially useful for long lengths of drain piping.



### Pre charged for up to 15 metres

If refrigerant piping length does not exceed 15 m, there is no need for on-site gas charging.

\*Applicable to RNQ30-48M.  
RNQ09-26M : 10 m

### Long-life filter

Maintenance is not required for one year. The filter is washable and can be reused.

### Filter sign

The filter sign warns you when it is time to clean the filter.

\*When using a wired remote controller the sign is displayed in the LCD. When using a wireless remote controller the filter sign lamp illuminates on the signal receiver unit.

### Ceiling soiling prevention function

Daikin's innovative air discharge mechanism keeps airflow away from the ceiling. Ceiling cleaning is less frequently required.

## Control features

### Auto-restart

If there is a power outage while the equipment is operating, operations will restart in the same mode as before the power cut when electricity is restored.

### Control by 2 remote controllers

Using 2 remote controllers you can operate the equipment locally or from a remote location.

Note: When a wireless remote controller is used, remote control by two remote controllers is not possible.

### Group control by 1 remote controller

You can turn up to 16 indoor units on/off with a single remote controller. (When using connected indoor units, the settings must all be the same and on/off will be simultaneous.)

### External command control

Operation and surveillance is carried out using the contact signal from the operation control box in the building surveillance (security) room.

\*An option is required.

### Central remote control

Optional central remote controller enables centralised control of up to 1024 indoor units (64 groups) from up to 1 kilometer away.

### Interlock control

Enables interlocking control with external equipment such as Heat Reclaim Ventilator.

### DIII-NET communication standard

Standardly equipped interface enables connection to centralised control system without need of an adaptor.

## Options

### High-efficiency filter unit

Two types are available: 65% and 90% colorimetry.

### Ultra long-life filter

Requires no maintenance for about 4 years\* (10,000h) in stores and offices.

\*For dust concentration of 0.15 mg/m<sup>3</sup>

### Fresh-air intake kit

You can provide air-conditioning with fresh air from outside. Convenient for places where a ventilation fan cannot be installed.

Note: \*Connecting ducts, insect nets, fire dampers, air filters, and other parts should, as required, be procured locally.  
\*\*Outside Air fan interlocked with air conditioning unit is necessary. Optional PCB(KRP1C63)is required for interlocking.  
\*\*\*It is recommended that the volume of outdoor air introduced through the kit is limited to 10% of the maximum airflow rate of the indoor unit. Introducing higher quantities will increase the operating noise and may also influence temperature sending.

## Others

### Anti corrosion treated heat exchangers

To achieve increased durability by improved resistance to salt corrosion and atmospheric pollution, coated Anti corrosion treated heat exchangers (with special acryl pretreatment) are used for the heat exchanger of the outdoor unit. In high corrosive areas, regular maintenance needs to be carried out.

# SPECIFICATIONS

## CEILING MOUNTED CASSETTE TYPE



Model Name	Indoor unit		13	18	21	26	30	36	42	48	
	Outdoor unit	V1	FCNQ13MV1	FCNQ18MV1	FCNQ21MV1	FCNQ26MV1	FCNQ30MV1	FCNQ36MV1	FCNQ42MV1	FCNQ48MV1	
Power supply	Outdoor unit	Y1	---	---	---	---	---	---	---	---	
		Y1	1 Phase, 220-240 V, 50 Hz			3 Phase, 380-415 V, 50 Hz				---	---
Cooling capacity <sup>1,2</sup>		kW	3.8	5.3	6.2	7.6	8.8	10.6	12.5	14.1	
		Btu/h	13,000	18,000	21,000	26,000	30,000	36,000	42,600	48,000	
Power consumption	Cooling <sup>1</sup>	kW	1.24	1.89	2.21	2.53	2.73	3.31	4.15	5.04	
		W/W	3.07	2.80	2.80	3.00	3.22	3.20	3.01	2.80	
Indoor unit	Colour	Unit	Fresh white								
	Airflow rate (H/L)	m <sup>3</sup> /min	13/10		21/13.5			32/20		33/22.5	
		cfm	459/353		741/477			1,130/706		1,165/794	
	Sound level (H/L) <sup>3</sup>	dB(A)	31/28		35/28			43/32		44/34	
	Dimensions (H×W×D)	Unit	256×840×840								
		Decorated panel	50×950×950				298×840×840				
	Machine weight	Unit	19.5		21			24			
		Decorated panel	5.5				---				
	Certified Operation range	°CWB	14 to 23			---			14 to 25		
	Outdoor unit	Colour	Ivory white								
Compressor		Type	Hermetically sealed rotary type				Hermetically sealed scroll type				
		Motor output	kW	0.9	1.4	1.8	2.2	2.7	3.75	4.5	
Refrigerant charge (R-410A)		kg	1.2	1.4	1.5	2.0	1.9	3.2	2.7	3.2	
		(Charged for 10 m)	(Charged for 10 m)	(Charged for 10 m)	(Charged for 10 m)	(Charged for 15 m)	(Charged for 15 m)	(Charged for 15 m)	(Charged for 15 m)	(Charged for 15 m)	
Sound level <sup>3</sup>		dB(A)	49	51	52	54	55	54	56	58	
Dimensions (H×W×D)		mm	550×765×285		595×845×300			735×825×300		990×940×320	
Machine weight		V1	36		40			49		56	
		Y1	---		---			---		---	
Certified Operation range		°CDB	19.4 to 46			---			21 to 46		
Piping connections	Liquid (Flare)	mm	φ6.4		---			φ9.5			
	Gas (Flare)	mm	φ12.7		---			φ15.9			
	Drain	Indoor unit	VP25 (I.D.φ25×O.D.φ32)								
Max. interunit piping length	Indoor unit	mm	φ18.0 (Hole)				φ26.0 (Hole)				
	Outdoor unit	m	30		30 (Equivalent length 50)			50 (Equivalent length 70)			
Max. installation level difference	m	10	15	20	20	30	30	30	30		
Heat insulation	Both liquid and gas piping										

## CEILING SUSPENDED TYPE



Model Name	Indoor unit		13	18	21	26	30	36	42	48	
	Outdoor unit	V1	FHNQ13MV1	FHNQ18MV1	FHNQ21MV1	FHNQ26MV1	FHNQ30MV1	FHNQ36MV1	FHNQ42MV1	FHNQ48MV1	
Power supply	Outdoor unit	Y1	---	---	---	---	---	---	---	---	
		Y1	1 Phase, 220-240 V, 50 Hz			3 Phase, 380-415 V, 50 Hz				---	---
Cooling capacity <sup>1,2</sup>		kW	3.8	5.3	6.2	7.6	8.8	10.4	12.3	14.1	
		Btu/h	13,000	18,000	21,000	26,000	30,000	35,000	42,000	48,000	
Power consumption	Cooling <sup>1</sup>	kW	1.58	2.04	2.38	2.65	3.07	3.64	4.51	5.51	
		W/W	2.40	2.60	2.60	2.87	2.86	2.73	2.56		
Indoor unit	Colour	White									
	Airflow rate (H/L)	m <sup>3</sup> /min	16/-	22-23/19-20			26-27/22-23		38-40/23-25		42-44/24-26
		cfm	565/-	777-812/671-706			918-953/777-812		1,341-1,412/812-883		1,483-1,553/847-918
	Sound level (H/L) (220 V) <sup>3</sup>	dB(A)	43/39	44/40			45/40		48/42		49/43
	Dimensions (H×W×D)	mm	195×960×680		195×1,160×680			195×1,400×680		195×1,590×680	
	Machine weight	kg	24		26			32		35	
	Certified operation range	°CWB	14 to 23			---			14 to 25		
Outdoor unit	Colour	Ivory white									
	Compressor	Type	Hermetically sealed rotary type				Hermetically sealed scroll type				
		Motor output	kW	0.9	1.4	1.8	2.2	2.7	3.75	4.5	
	Refrigerant charge (R-410A)	kg	1.2	1.4	1.5	2.0	1.9	3.2	2.7	3.2	
		(Charged for 10 m)	(Charged for 10 m)	(Charged for 10 m)	(Charged for 10 m)	(Charged for 15 m)	(Charged for 15 m)	(Charged for 15 m)	(Charged for 15 m)	(Charged for 15 m)	
	Sound level <sup>3</sup>	dB(A)	49	51	52	54	55	54	56	58	
	Dimensions (H×W×D)	mm	550×765×285		595×845×300			735×825×300		990×940×320	
	Machine weight	V1	36		40			49		56	
		Y1	---		---			---		---	
	Certified operation range	°CDB	19.4 to 46			---			21 to 46		
Piping connections	Liquid (Flare)	mm	φ6.4		---			φ9.5			
	Gas (Flare)	mm	φ12.7		---			φ15.9			
	Drain	Indoor unit	VP20 (I.D.φ20×O.D.φ26)								
Max. interunit piping length	Indoor unit	mm	φ18.0 (Hole)				φ26.0 (Hole)				
	Outdoor unit	m	30		30 (Equivalent length 50)			50 (Equivalent length 70)			
Max. installation level difference	m	10	15	20	20	30	30	30	30		
Heat insulation	Both liquid and gas piping										

Note :  
<sup>1</sup>Rated cooling capacities are based on the following conditions: Indoor temp., 27°CDB, 19.0°CWB; outdoor temp. 35°CDB, 24°CWB. Equiv. refrigeration piping, 7.5 m (horizontal).  
<sup>2</sup>Capacities are net, including a deduction for cooling for indoor fan motor heat.  
<sup>3</sup>Anechoic chamber conversion value, measured according to JIS parameters and criteria. During operation these values are somewhat higher owing to ambient conditions.

## DUCT CONNECTION LOW STATIC PRESSURE TYPE



Model Name	Indoor unit		09	13	18	21	26		
	Outdoor unit	V1	FDBNQ09MV1	FDBNQ13MV1	FDBNQ18MV1	FDBNQ21MV1	FDBNQ26MV1		
Power supply	Outdoor unit	Y1	---	---	---	---	---		
		Y1	1 Phase, 220-240 V, 50 Hz				3 Phase, 380-415 V, 50 Hz		
Cooling capacity <sup>1,2</sup>		kW	2.7	3.8	5.2	6.2	7.6		
		Btu/h	9,200	13,000	17,700	21,000	26,000		
Power consumption	Cooling <sup>1</sup>	kW	0.86	1.28	2.06	2.38	2.62		
		W/W	3.14	2.97	2.52	2.60	2.90		
Indoor unit	Colour	Ivory white					---		
	Fan	Airflow rate (H/L) <sup>3</sup>	m <sup>3</sup> /min	13/11		18/15			
			cfm	459/388		635/530			
	Rated external static pressure <sup>3</sup>	mmH <sub>2</sub> O	2.0						
	Sound level (H/L) (220 V) <sup>4</sup>	dB(A)	41/38			43/40			
	Dimensions (H×W×D)	mm	260×900×580			260×1,300×580			
	Machine weight	kg	25			32			
	Certified Operation range	°CWB	14 to 23			14 to 25			
	Outdoor unit	Colour	Ivory white					---	
		Compressor	Type	Hermetically sealed rotary type					
Motor output			kW	0.65	0.9	1.4	1.8	2.2	
Refrigerant charge (R-410A)		kg	0.9	1.2	1.4	1.5	2.0		
		(Charged for 10 m)	(Charged for 10 m)	(Charged for 10 m)	(Charged for 10 m)	(Charged for 10 m)	(Charged for 10 m)		
Sound level <sup>4</sup>		dB(A)	48	49	51	52	54		
Dimensions (H×W×D)		mm	550×765×285		595×845×300			735×825×300	
Machine weight		V1	35		36		49		
		Y1	---		---		---		
Certified Operation range		°CDB	19.4 to 46			21 to 46			
Piping connections	Liquid (Flare)	mm	φ6.4						
	Gas (Flare)	mm	φ9.5		φ12.7			φ15.9	
	Drain	Indoor unit	3/4B (I.D.φ21.6×O.D.φ27.2)						
Max. interunit piping length	Indoor unit	mm	φ18.0 (Hole)						
	Outdoor unit	m	30			30 (Equivalent length 50 m)			
Max. installation level difference	m	10	15	20	20	30			
Heat insulation	Both liquid and gas piping								

## DUCT CONNECTION MIDDLE STATIC PRESSURE TYPE



Model Name	Indoor unit		26	30	36	42	48		
	Outdoor unit	V1	FDMNQ26MV1	FDMNQ30MV1	FDMNQ36MV1	FDMNQ42MV1	FDMNQ48MV1		
Power supply	Outdoor unit	Y1	---	---	---	---	---		
		Y1	1 Phase, 220-240 V, 50 Hz			3 Phase, 380-415 V, 50 Hz			
Cooling capacity <sup>1,2</sup>		kW	7.6	8.8	10.6	12.3	14.1		
		Btu/h	26,000	30,000	36,000	42,000	48,000		
Power consumption	Cooling <sup>1</sup>	kW	2.62	3.03	3.53	4.49	5.56		
		W/W	2.90	2.90	3.00	2.74	2.54		
Indoor unit	Colour	Ivory white					---		
	Fan	Airflow rate (H) <sup>3</sup>	m <sup>3</sup> /min	23		37		42	
			cfm	812		1,306		1,483	
	Rated external static pressure <sup>3</sup>	mmH <sub>2</sub> O	8.5		9.8		8.0		
	Sound level (H/L) (220 V) <sup>4</sup>	dB(A)	42/38		44/36		45/37		
	Dimensions (H×W×D)	mm	305×1,350×680		305×1,550×680				
	Machine weight	kg	43		52				
	Certified Operation range	°CWB	14 to 25						
	Outdoor unit	Colour	Ivory white					---	
		Compressor	Type	Hermetically sealed rotary type					
Motor output			kW	2.2		2.7		3.75	
Refrigerant charge (R-410A)		kg	2.0	1.9	3.2	2.7	3.2		
		(Charged for 10 m)	(Charged for 10 m)	(Charged for 15 m)	(Charged for 15 m)	(Charged for 15 m)	(Charged for 15 m)		
Sound level <sup>4</sup>		dB(A)	54	55	54	56	58		
Dimensions (H×W×D)		mm	735×825×300		990×940×320				
Machine weight		V1	56		77		103		
		Y1	---		---		---		
Certified operation range		°CDB	19.4 to 46		21 to 46				
Piping connections	Liquid (Flare)	mm	φ9.5						
	Gas (Flare)	mm	φ12.7		φ15.9				
	Drain	Indoor unit	3/4B (I.D.φ21.6×O.D.φ27.2)						
Max. interunit piping length	Indoor unit	mm	φ18.0 (Hole)						
	Outdoor unit	m	30		50 (Equivalent length 70 m)				
Max. installation level difference	m	20	20	30	30	30			
Heat insulation	Both liquid and gas piping								

Note :  
<sup>1</sup>Rated cooling capacities are based on the following conditions: Indoor temp., 27°CDB, 19.0°CWB; outdoor temp. 35°CDB, 24°CWB. Equiv. refrigeration piping, 7.5 m (horizontal).  
<sup>2</sup>Capacities are net, including a deduction for cooling for indoor fan motor heat.  
<sup>3</sup>Please see fan characteristic document in detail.  
<sup>4</sup>Anechoic chamber conversion value, measured according to JIS parameters and criteria. During operation these values are somewhat higher owing to ambient conditions.

# OPTIONS

## Indoor unit

### CEILING MOUNTED CASSETTE TYPE

Name of option	Remark	Kit name						
		FCNQ13MV1	FCNQ18MV1	FCNQ21MV1	FCNQ26MV1	FCNQ30MV1	FCNQ36MV1	FCNQ42MV1
Decoration panel		BYCP125K-W1						
Sealing material of air discharge outlet		KDBH55K160F						
Panel spacer		KDBP55H160FA						
Fresh air intake kit <sup>1</sup>	Chamber type	Without T-joint pipe and fan						
	Direct installation type	With T-joint pipe, without fan						
Chamber connection kit <sup>2</sup>		KKSJ55KA160						
Insulation kit for high humidity		KDTP55K80						KDTP55K160
High-efficiency filter (including chamber)	(Colorimetric method 65%)	KAFP556B80					KAFP556B160	
	(Colorimetric method 90%)	KAFP557B80					KAFP557B160	
Replacement high-efficiency filter	(Colorimetric method 65%)	KAFP552B80					KAFP552B160	
	(Colorimetric method 90%)	KAFP553B80					KAFP553B160	
Filter chamber		KDDFP55B160						
Replacement long-life filter		KAFP551K160						
Ultra long-life filter		KAFP55B160						
Replacement ultra long-life filter		KAFP55H160H						
Branch duct chamber		KDJP55B80						KDJP55B160
Remote controller	Wireless type	Cooling only					BRC7F633F	
	Wired type <sup>3</sup>	BRC1C61						
Navigation Remote Controller	Wired type <sup>3</sup>	BRC1E62						
Central remote controller <sup>4</sup>		DCS302CA61						
Unified ON/OFF controller <sup>4</sup>		DCS301BA61						
Schedule timer <sup>4</sup>		DST301BA61						
Intelligent Touch Controller <sup>4</sup>		DCS601C51						
Adaptor for wiring <sup>5</sup>		KRP1C63						
Wiring adaptor for electrical appendices <sup>5</sup>		KRP4AA53						
Installation box for adaptor PCB		KRP1H98						
Remote sensor		KRCS01-4B						

Note: <sup>1</sup>Refer to page 6 for the details.

<sup>2</sup>Required for installing high-efficiency filter or ultra long-life filter.

<sup>3</sup>Wiring for wired remote controller to be procured locally.

<sup>4</sup>The indoor unit is equipped standardly with the interface adaptor for SkyAir series. An option is unnecessary.

<sup>5</sup>Installation box for adaptor PCB (KRP1H98) is necessary.

## Indoor unit

### CEILING SUSPENDED TYPE

Name of option	Remark	Kit name						
		FHNQ13MV1	FHNQ18MV1	FHNQ21MV1	FHNQ26MV1	FHNQ30MV1	FHNQ36MV1	FHNQ42MV1
Replacement long-life filter	Resin net	KAF501DA56	KAF501DA80	KAF501DA112			KAF501DA160	
L-type piping kit (for upward direction)		KHFJ5F50		KHFJ5F60		KHFP5MA160		
Remote controller	Wireless type	BRC7NU66						
	Wired type <sup>1</sup>	BRC1NU61						

Note: <sup>1</sup>Wiring for wired remote controller to be procured locally.

### DUCT CONNECTION LOW STATIC PRESSURE TYPE

Name of option	Remark	Kit name				
		FDBNQ09MV1	FDBNQ13MV1	FDBNQ18MV1	FDBNQ21MV1	FDBNQ26MV1
Remote controller	Wireless type	BRC4C64				
	Wired type <sup>1</sup>	BRC1C61				
Navigation Remote Controller	Wired type <sup>1</sup>	BRC1E62				

Note: <sup>1</sup>Wiring for wired remote controller to be procured locally.

### DUCT CONNECTION MIDDLE STATIC PRESSURE TYPE

Name of option	Remark	Kit name				
		FDMNQ26MV1	FDMNQ30MV1	FDMNQ36MV1	FDMNQ42MV1	FDMNQ48MV1
Remote controller	Wireless type	BRC4C64				
	Wired type <sup>1</sup>	BRC1C61				
Navigation Remote Controller	Wired type <sup>1</sup>	BRC1E62				

Note: <sup>1</sup>Wiring for wired remote controller to be procured locally.

## Round flow type: List of optional parts required to achieve different flow patterns

For each flow pattern – all round, 4-way, 3-way, 2-way, branch duct connection – the compatibility of each independently installed option (shown in the column on the left) to accessory options (listed across the top of each table) is shown in the cells where the relevant row and column intersect. A circle (○) indicates compatibility, and a cross (×) indicates incompatibility. Any options not shown below are not suitable for independent or accessory installation.

### All round flow 4-way flow

Independently installable optional parts	Optional accessory parts	Panel spacer <sup>1</sup>	Wireless remote controller	Fresh air intake kit (Chamber type) <sup>1,2</sup>	Fresh air intake kit (direct mount)	High-humidity operation kit	High-efficiency filter <sup>2</sup>	Ultra-long-life filter <sup>2</sup>
Operation control related	Wireless remote controller	○		○	○	○	○	○
Auxiliary function related	Fresh air intake kit (Chamber type) <sup>1,2</sup>	○	○		×	×	○	○
	Fresh air intake kit (direct mount)	○	○	×		○	○	○
	High-humidity operation kit	×	○	×	○		×	×
Filter related	High-efficiency filter <sup>2</sup>	○	○	○	○	×		×
	Ultra-long-life filter <sup>2</sup>	○	○	○	○	×	×	

### 3-way flow 2-way flow

Independently installable optional parts	Optional accessory parts	Panel spacer <sup>1</sup>	Wireless remote controller	Fresh air intake kit (Chamber type) <sup>1,2</sup>	Fresh air intake kit (direct mount)	High-humidity operation kit	High-efficiency filter <sup>2</sup>	Ultra-long-life filter <sup>2</sup>
Operation control related	Wireless remote controller	○ <sup>3</sup>		○	○	○	×	○
Auxiliary function related	Fresh air intake kit (Chamber type) <sup>1,2</sup>	○ <sup>3</sup>	○		×	×	×	○
	Fresh air intake kit (direct mount)	○ <sup>3</sup>	○	×		○	×	○
	High-humidity operation kit	×	○	×	○		×	×
Filter related	Ultra-long-life filter <sup>2</sup>	○ <sup>3</sup>	○	○	○	×	×	

### Branch duct connection

Independently installable optional parts	Optional accessory parts	Panel spacer <sup>1</sup>	Wireless remote controller	Fresh air intake kit (Chamber type) <sup>1,2</sup>	Fresh air intake kit (direct mount)	High-humidity operation kit	High-efficiency filter <sup>2</sup>	Ultra-long-life filter <sup>2</sup>
2-way branch / unit 2-way flow	×	○	○	○ <sup>4</sup>	×	×	○	
1-way branch / unit 2-way flow	×	○	○	○ <sup>4</sup>	×	×	○	

<sup>1</sup>In some cases, depending on how the unit is embedded in the ceiling, use of branch ducts and fresh air intake kits may not be possible. Before starting installation work make sure to check whether or not joint installation is possible. In particular, ensure that the lower fixing position caused by the addition of panel spacers is acceptable.

<sup>2</sup>Use a chamber connection kit if two different types of optional chamber are used together. In this case, the fresh air intake kit must be installed in the upper position.

<sup>3</sup>It is not possible to use panel spacers in a 2-way flow installation.

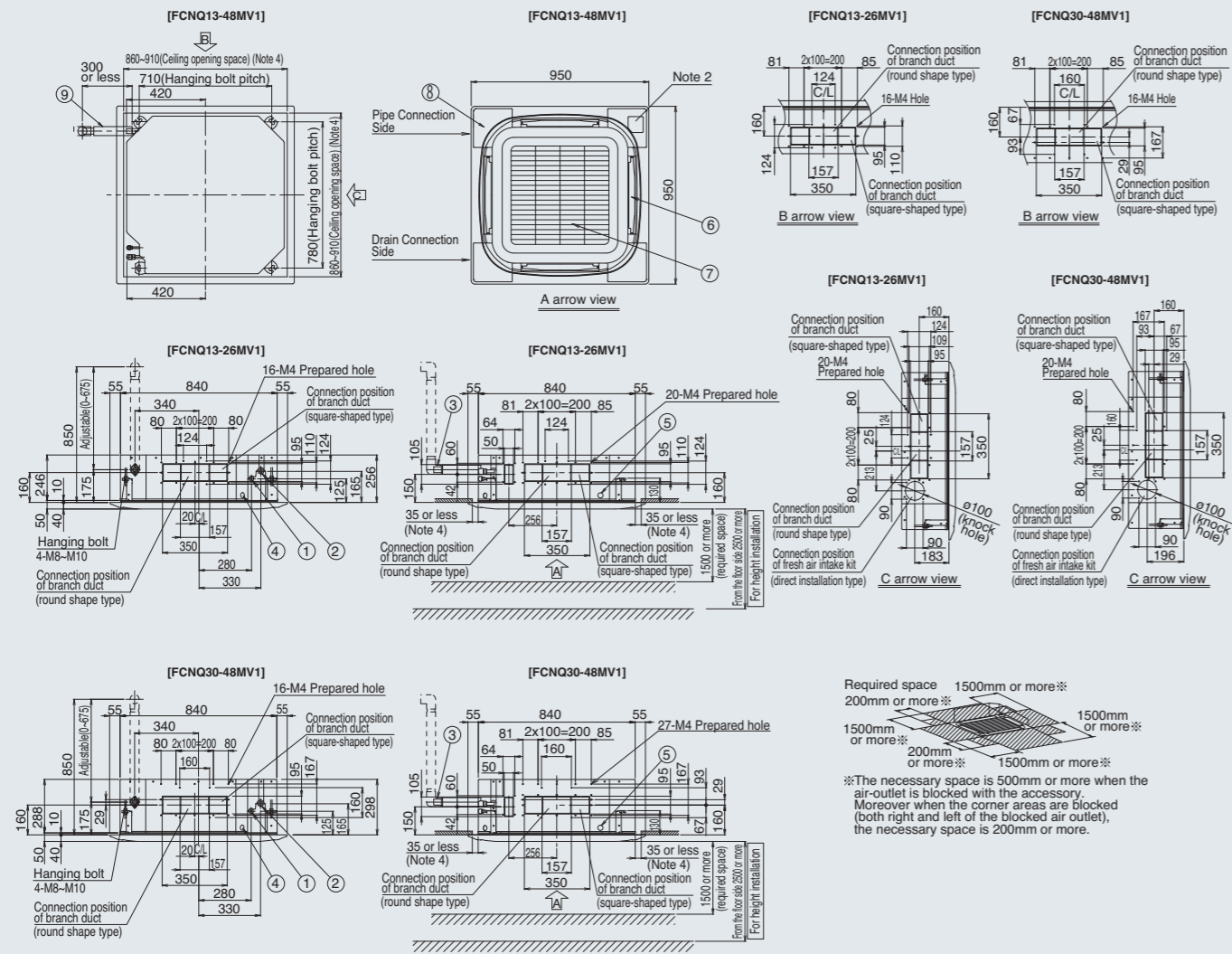
<sup>4</sup>It is not possible to install a branch duct on the same side to which a fresh air intake kit (direct mount) is installed.

## Outdoor unit

Name of option	Kit name								
	RNQ09MV1	RNQ13MV1	RNQ18MV1	RNQ21MV1	RNQ26MV1	RNQ30MV1	RNQ36MV1	---	---
Central drain plug			KKP014A4					KKPJ5F180	

# DIMENSIONS (Unit: mm)

## CEILING MOUNTED CASSETTE TYPE



Notes:

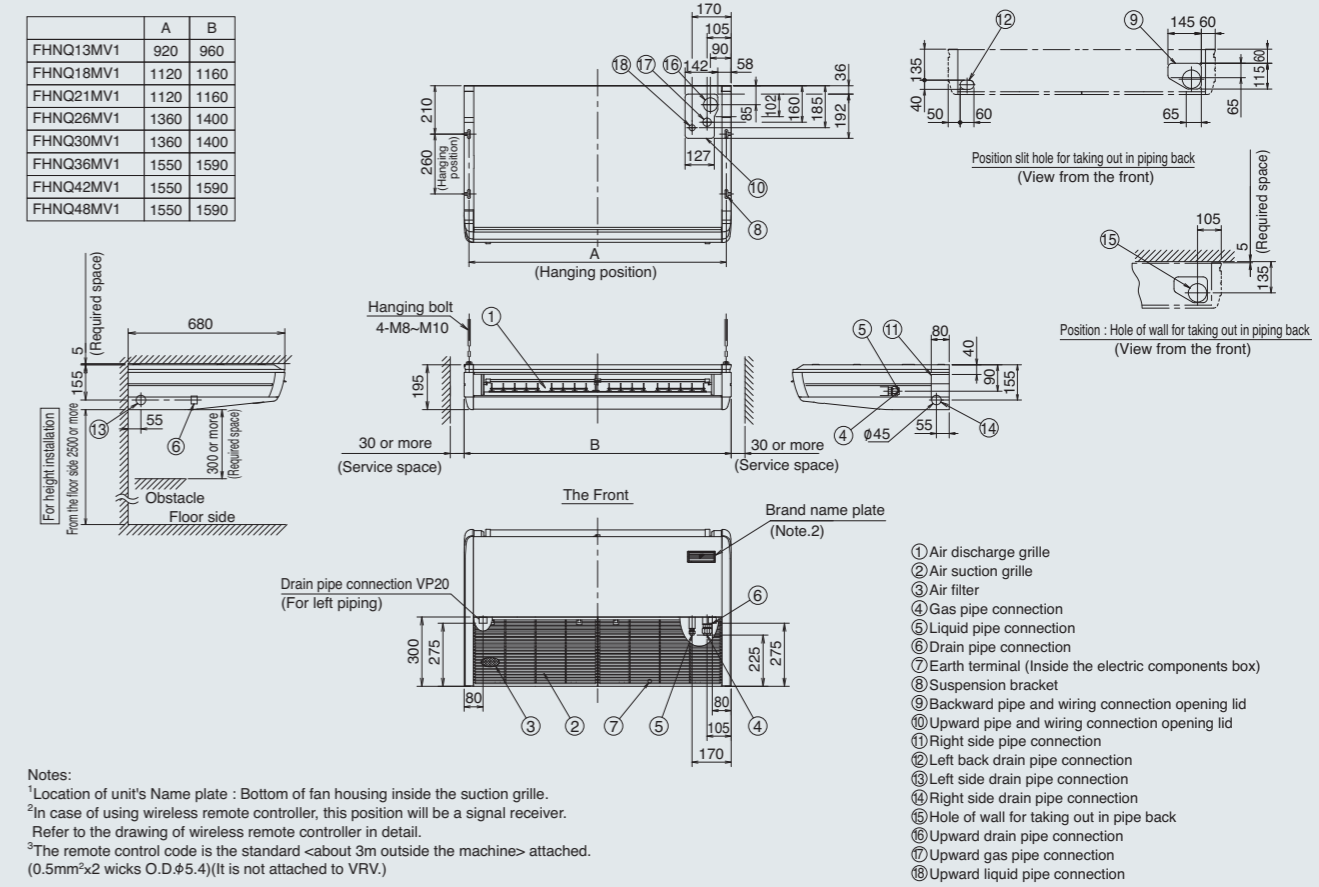
- Sticking location for manufacturer's label
- manufacturer's label for indoor unit:
- Suction grille inner side's electric components box's lid surface
- manufacturer's label for decoration panel :
- Decoration panel's corner decoration cover inner surface
- In case of using wireless remote controller, this position will be a signal receiver. Refer to the drawing of wireless remote controller in detail.
- When the temperature and humidity in the ceiling exceed 30°C and RH 80% or the fresh air is inducted into the ceiling or the unit continues 24 hour operation, an additional insulation (thickness 10mm or more of glasswool or polyethylene form) is required.
- Though the installation is acceptable up to maximum of 910mm square ceiling opening, keep the clearance of 35mm or less between the indoor unit and the ceiling opening so that the panel overlap allowance can be ensured.
- Please do not place the thing been damp and troubled under an indoor unit.
- When the case where humidity is 80% or more, and the drain outlet are choked up and the air filter are dirty, dew may fall.

① Liquid pipe connection  
 ② Gas pipe connection  
 ③ Drain pipe connection  
 ④ Power-source wiring and a unit wiring connection  
 ⑤ Connection wiring/remote control wiring connection  
 ⑥ Air-outlet  
 ⑦ Suction grille  
 ⑧ Corner decoration cover  
 ⑨ Drain hose (accessory)

## CEILING SUSPENDED TYPE

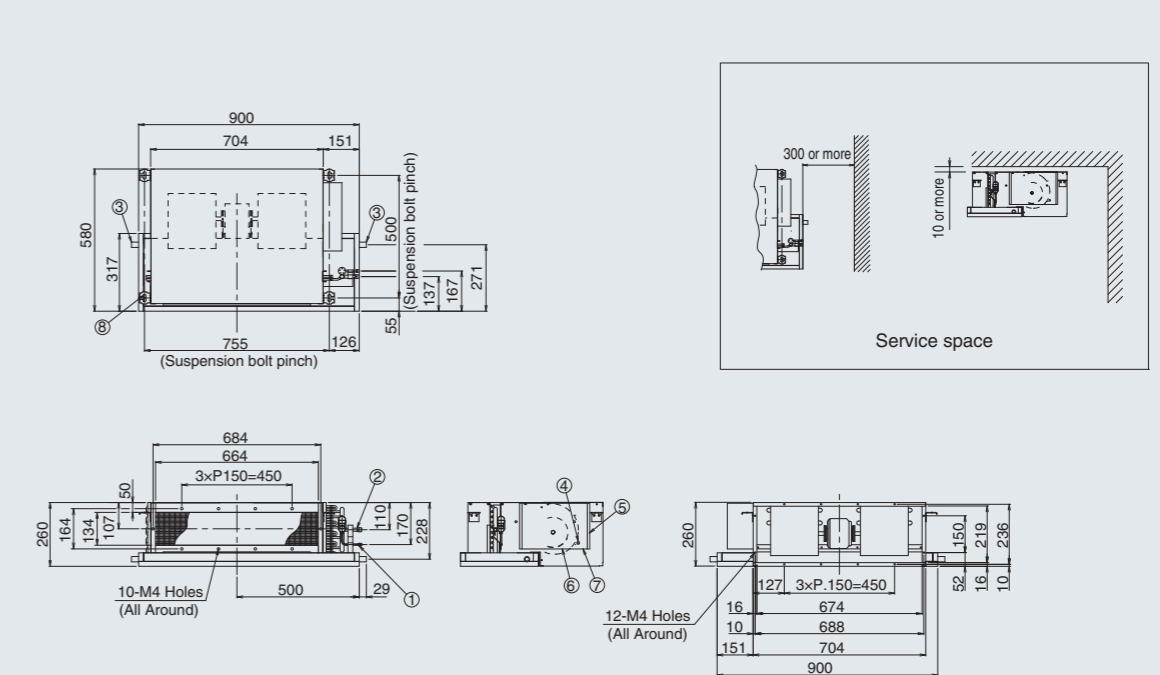
### [FHNQ13/18/21/26/30/36/42/48MV1]

	A	B
FHNQ13MV1	920	960
FHNQ18MV1	1120	1160
FHNQ21MV1	1120	1160
FHNQ26MV1	1360	1400
FHNQ30MV1	1360	1400
FHNQ36MV1	1550	1590
FHNQ42MV1	1550	1590
FHNQ48MV1	1550	1590



## DUCT CONNECTION LOW STATIC PRESSURE TYPE

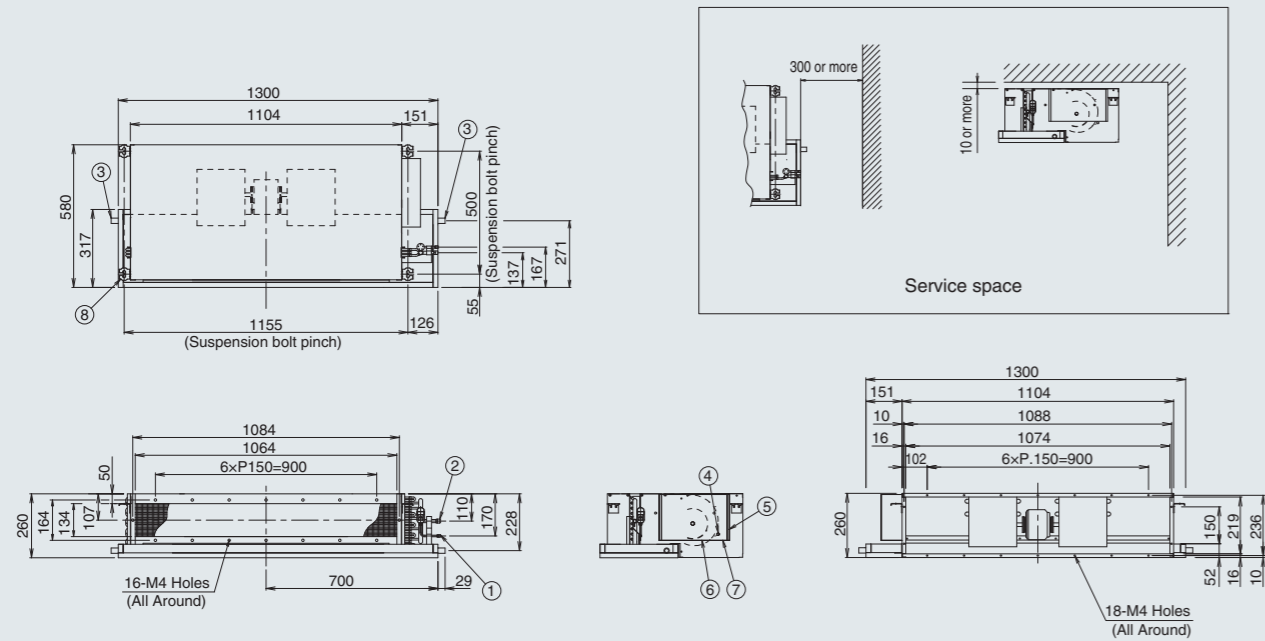
### [FDBNQ09/13/18MV1]



# DIMENSIONS (Unit: mm)

## DUCT CONNECTION LOW STATIC PRESSURE TYPE

[FDBNQ21/26MV1]

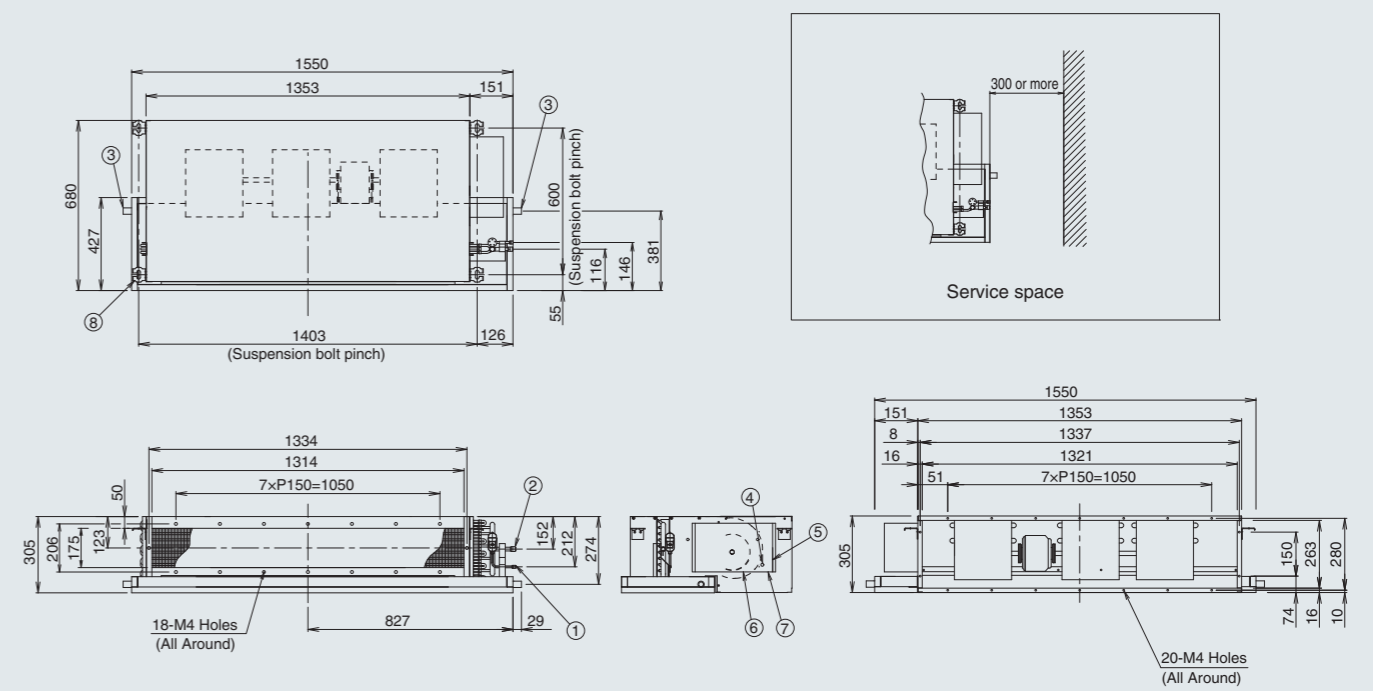


- ① Liquid pipe connection
- ② Gas pipe connection
- ③ Drain pipe connection
- ④ Ground terminal
- ⑤ Switch box
- ⑥ Control wiring intake (for remote controller)
- ⑦ Control wiring intake (for outdoor unit)
- ⑧ Suspension bracket

Note: 1 Location of unit's Name Plate: Chamber cap

## DUCT CONNECTION MIDDLE STATIC PRESSURE TYPE

[FDMNQ30/36/42/48MV1]

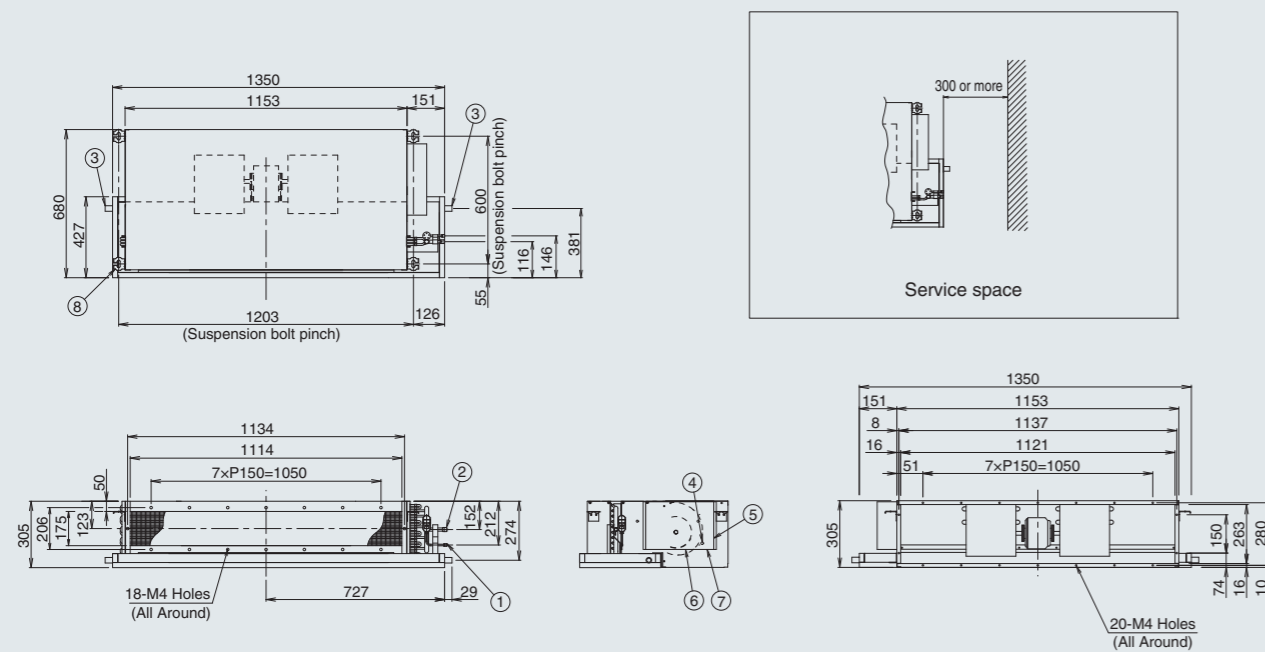


- ① Liquid pipe connection
- ② Gas pipe connection
- ③ Drain pipe connection
- ④ Ground terminal
- ⑤ Switch box
- ⑥ Control wiring intake (for remote controller)
- ⑦ Control wiring intake (for outdoor unit)
- ⑧ Suspension bracket

Note: 1 Location of unit's Name Plate: Chamber cap

## DUCT CONNECTION MIDDLE STATIC PRESSURE TYPE

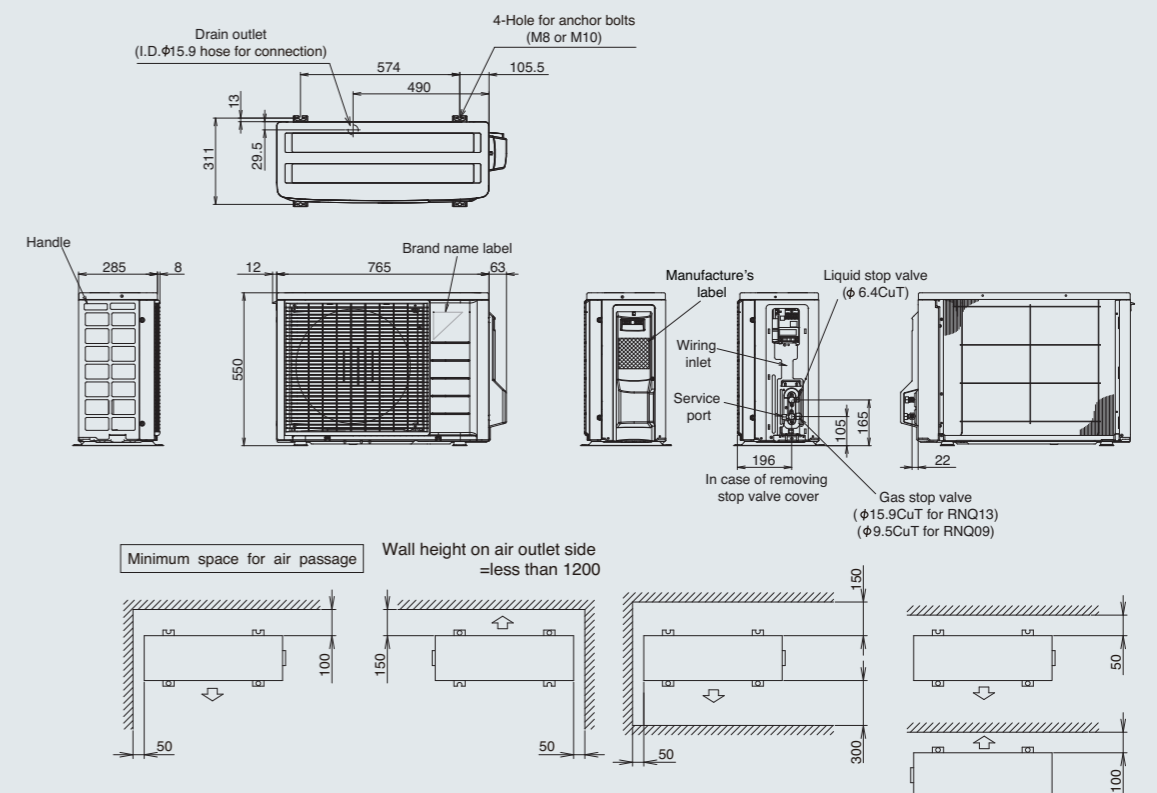
[FDMNQ26MV1]



- ① Liquid pipe connection
- ② Gas pipe connection
- ③ Drain pipe connection
- ④ Ground terminal
- ⑤ Switch box
- ⑥ Control wiring intake (for remote controller)
- ⑦ Control wiring intake (for outdoor unit)
- ⑧ Suspension bracket

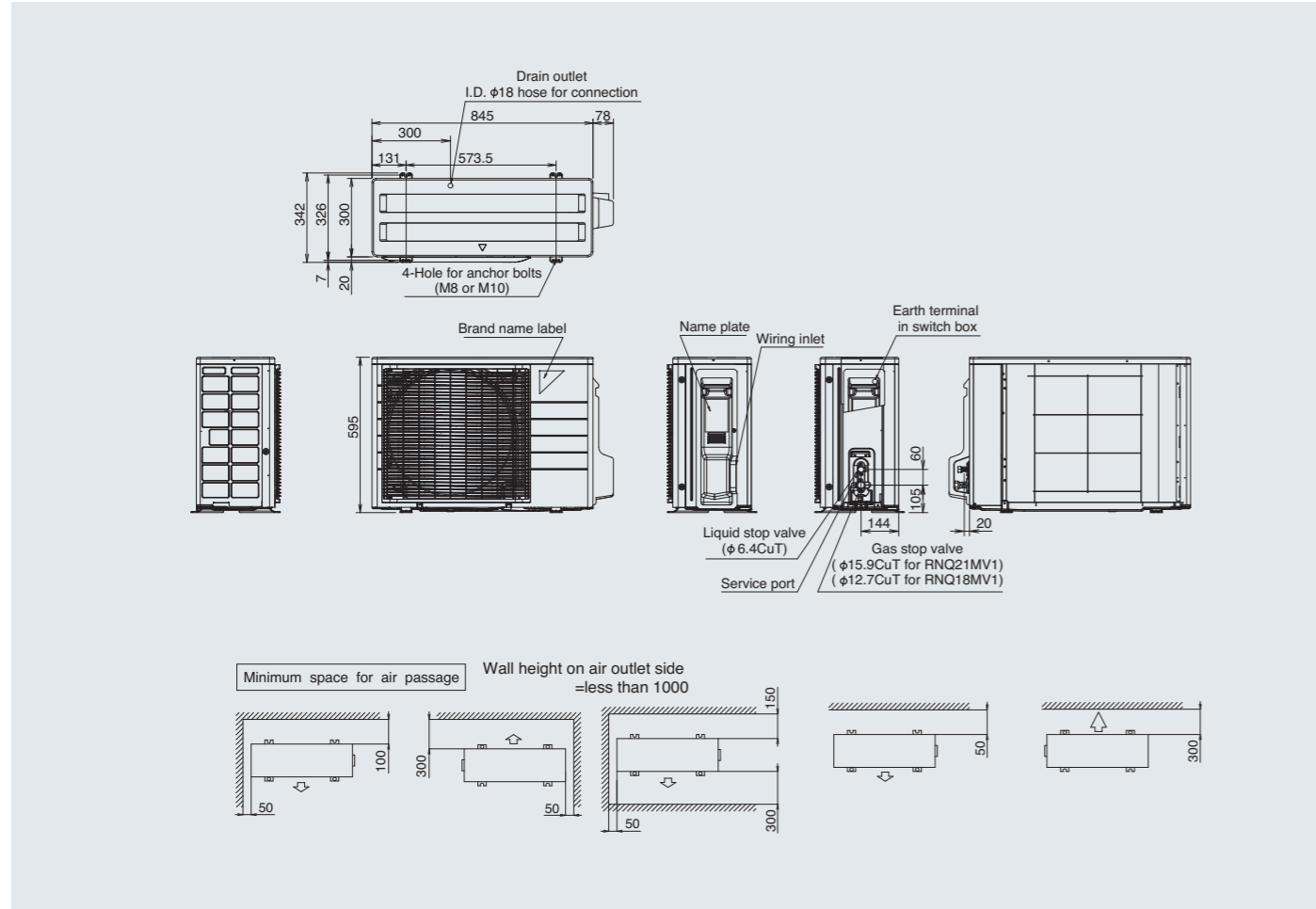
Note: 1 Location of unit's Name Plate: Chamber cap

## OUTDOOR UNIT // RNQ09/13MV1

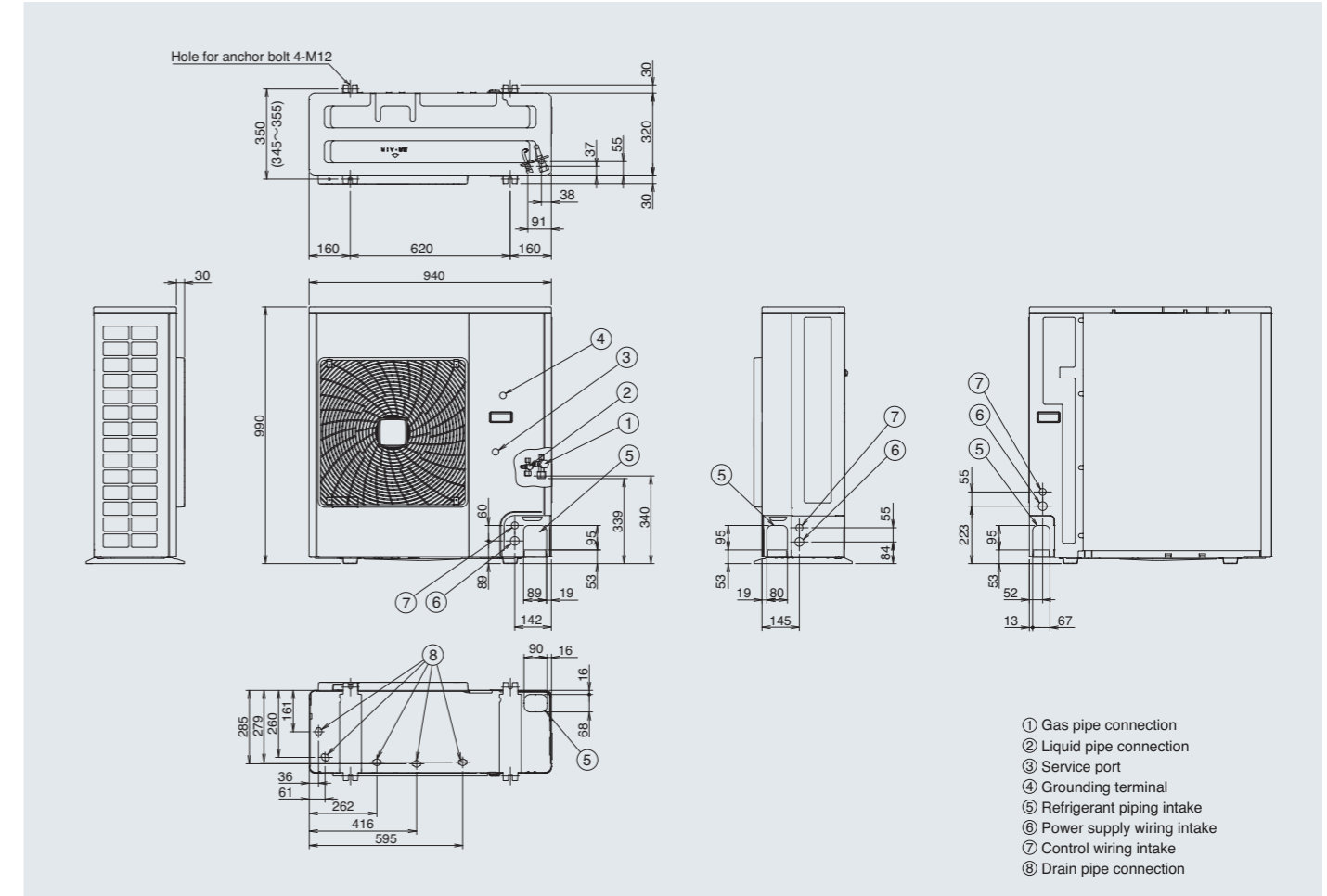


# DIMENSIONS (Unit: mm)

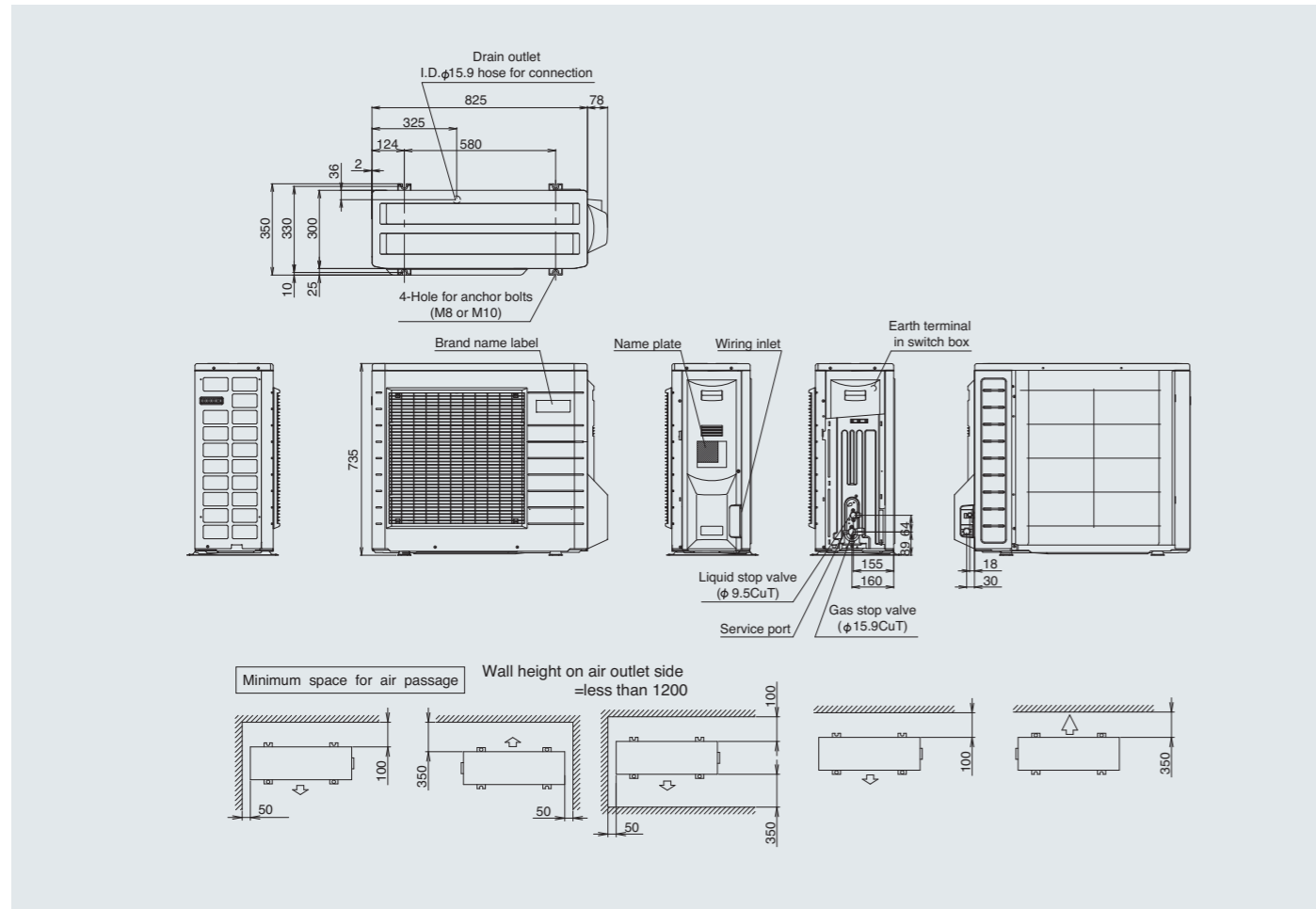
## OUTDOOR UNIT // RNQ18/21MV1



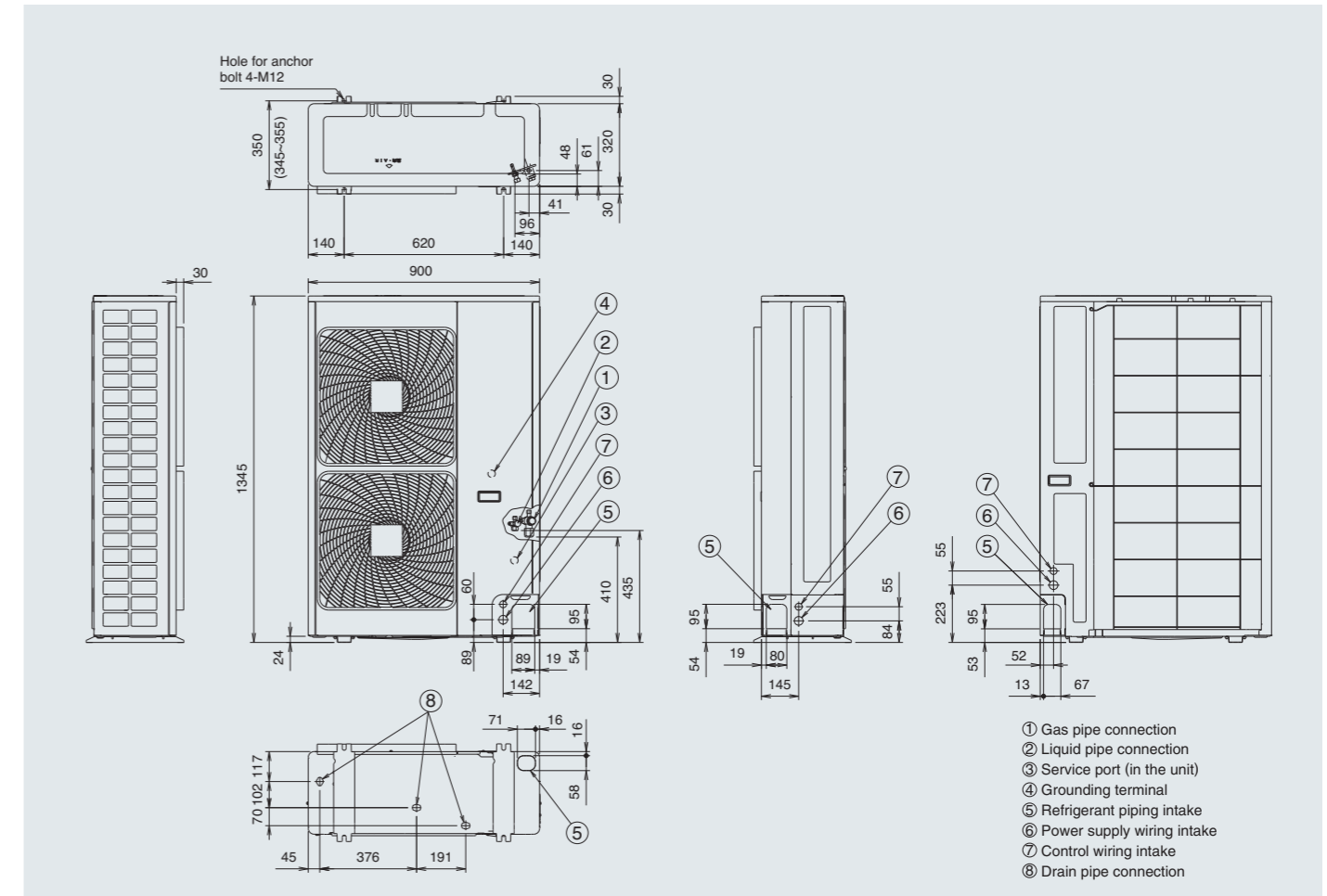
## OUTDOOR UNIT // RNQ30MV1, RNQ30MY1



## OUTDOOR UNIT // RNQ26MV1, RNQ26MY1



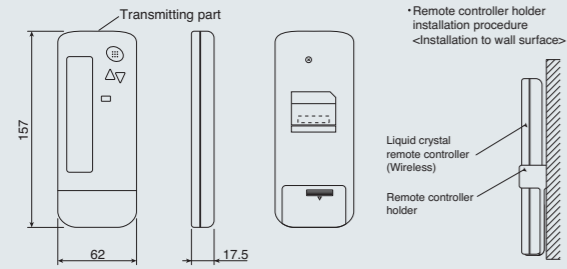
## OUTDOOR UNIT // RNQ36MV1, RNQ36/42/48MY1



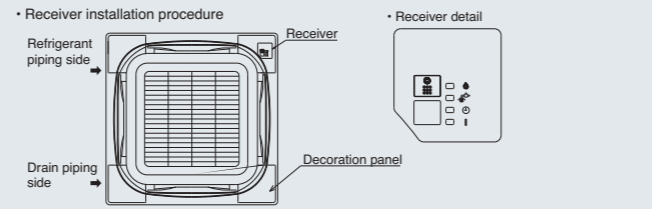
## REMOTE CONTROLLER

《Wireless type》 · Remote controller dimensions

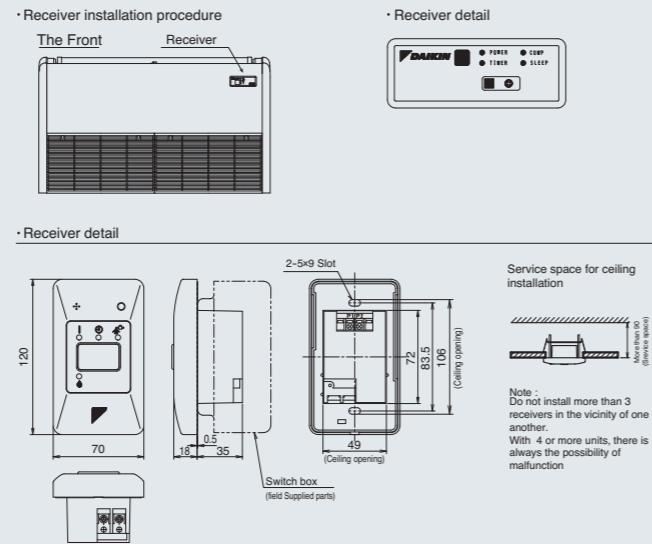
BRC7F633F BRC4C64



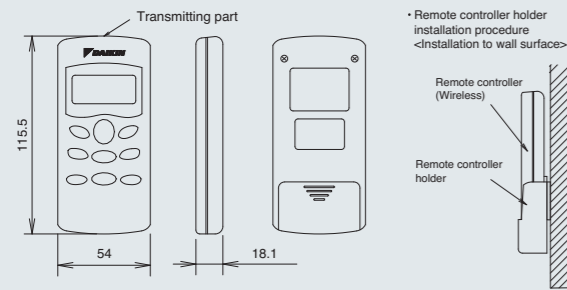
CEILING MOUNTED CASSETTE TYPE <Round Flow>



CEILING SUSPENDED TYPE

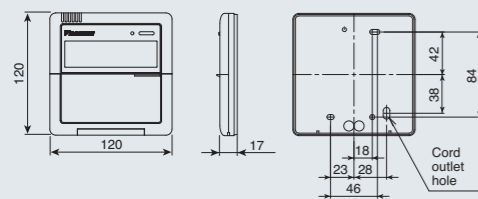


BRC7NU66



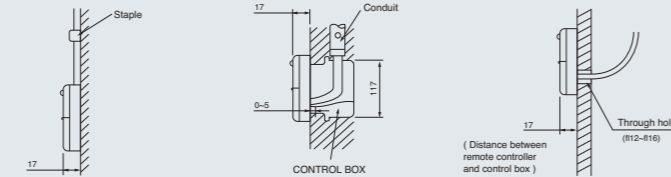
《Wired type》 · Remote controller dimensions

BRC1C61



Remote controller installation procedure

- A Exposed body, exposed cord
- B Exposed body, embedded cord
- C Exposed body, embedded code



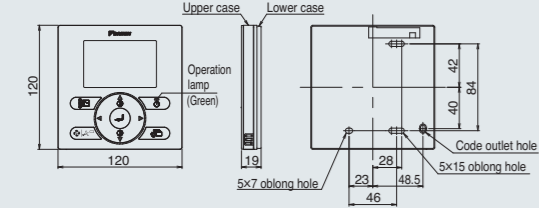
Note) 1. Remote controller cord and staple are not attached. They are field supplied parts.

Specifications of cord

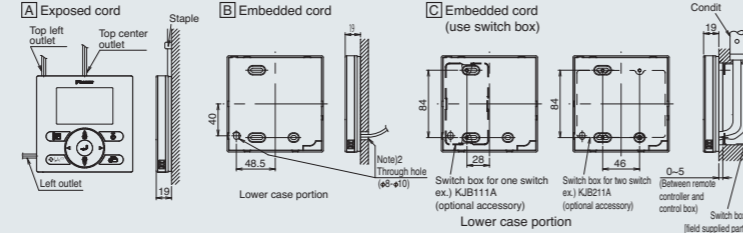
Type *	Vinyl cord with sheath or cable (insulated thickness: 1 mm or more)
Size	0.75~1.25 mm <sup>2</sup>
Total length	500 m

\* Countries requiring EMC: Shield wire (insulated thickness: 1 mm or more)

BRC1E62



Installation method



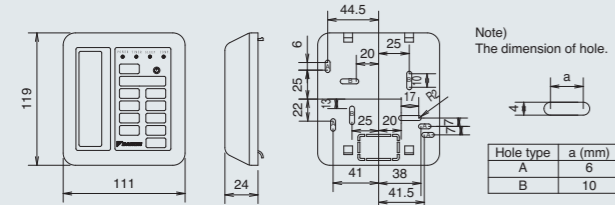
Note) 1. Remote controller cord and staple are not attached. They are field supplied parts.

Specifications of cord

Type	Vinyl cord with sheath or cable (insulated thickness: 1mm or more)
Size	0.75~1.25 mm <sup>2</sup>
Total length	500 m

Note) 2. If the hole size is too large or the location is not proper, the hole may come out from the remote controller.

BRC1NU61



Note) The dimension of hole.

Hole type	a (mm)
A	6
B	10

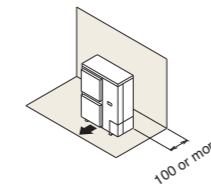
## ■ For RNQ30-48MV1/Y1

### 1 When there is an obstruction on the inlet side

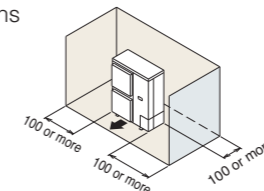
#### 1) When the overhead space is open

##### 1. For single unit installation

When there is an obstruction only on the inlet side

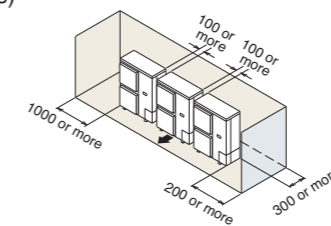


When there are obstructions on both sides



##### 2. For multiple units installation (more than two units)

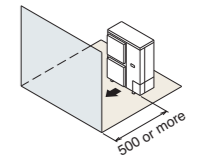
When there are obstructions on both sides



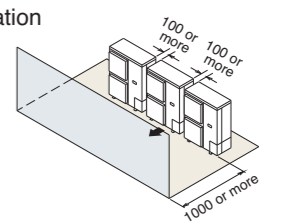
### 2 When there is an obstruction on the outlet side

#### 1) When the overhead space is open

##### 1. For single unit installation



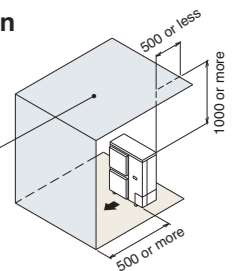
##### 2. For multiple units installation (more than two units)



#### 2) When there is an obstruction in the overhead space

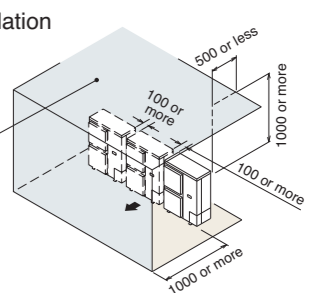
##### 1. For single unit installation

An obstruction in the overhead space



##### 2. For multiple units installation (more than two units)

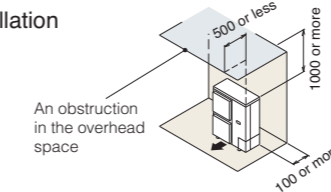
An obstruction in the overhead space



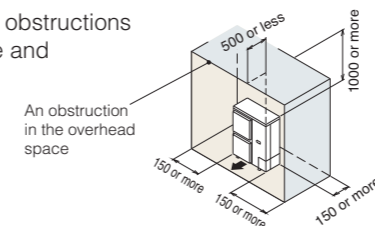
### 2) When there is an obstruction in the overhead space

#### 1. For single unit installation

When there is an obstruction on the inlet side

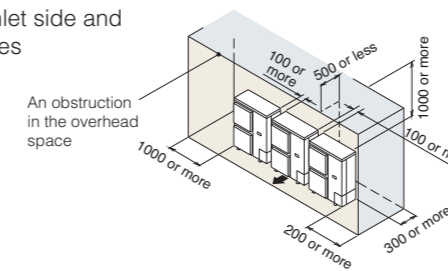


When there are obstructions on the inlet side and both sides



#### 2. For multiple units installation (more than two units)

When there are obstructions on the inlet side and both sides



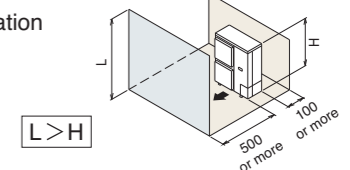
### 3 When there are obstructions on both the inlet and outlet sides

(When the obstruction on the outlet side is higher than the unit itself)

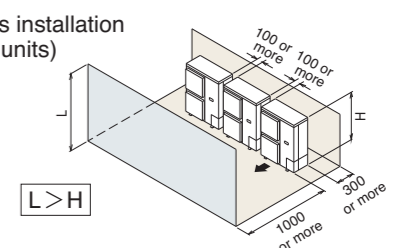
#### 1) When the overhead space is open

(There is no limit to the height of the obstruction on the outlet side.)

##### 1. For single unit installation



##### 2. For multiple units installation (more than two units)



Note : As for other patterns of installation, please refer to Installation manual or Engineering Data Book.

